

MANITOBA-MINNESOTA TRANSMISSION PROJECT

Clean Environment Commission Hearing

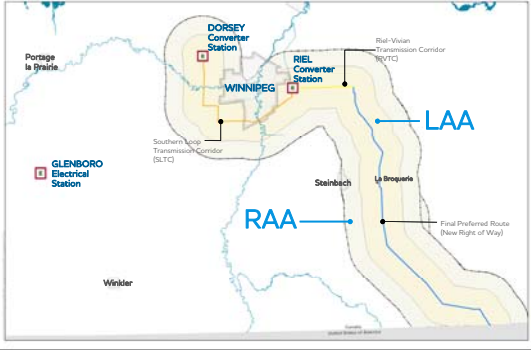


Human environment

Heritage Resources	Infrastructure & Services	Employment & Economy	Agriculture
Land & Resource Use	Visual Quality	Human Health Risk	Community Health

2

Visual quality assessment areas



3

Overview What We Heard What We Assessed Key Issue Review Mitigation, Monitoring and Follow-up Findings and Conclusions

Why visual quality?

Visual quality of landscape is important to local residents, First Nations/Metis, recreationalists, tourists

How does the Project change the aesthetic character of the area?



4

Overview What We Heard What We Assessed Key Issue Review Mitigation, Monitoring and Follow-up Findings and Conclusions

Lessons learned

- Previous project concerns helped identify and prioritize viewpoints
- Manitoba Hydro applied accepted practices for assessing visual quality



5

Overview What We Heard What We Assessed Key Issue Review Mitigation, Monitoring and Follow-up Findings and Conclusions

What we heard

Issues related to visual quality:

- Property
- Tourism, recreation
- Quality of life




6

Overview | What We Heard | What We Assessed | Key Findings | Mitigation, Monitoring and Follow-up | Conclusions

Routing considerations

- Final Preferred Route generally located away from residences, parks, recreation areas communities




7

Overview | What We Heard | What We Assessed | Key Issue Review | Mitigation, Monitoring and Follow-up | Findings and Conclusions

What we assessed

Visual quality

- Visual sensitivity
- Landscape character
- Prominence



8

Overview | What We Heard | What We Assessed | Key Issue Review | Mitigation, Monitoring and Follow-up | Findings and Conclusions

Landscape character class

Landscape Character Class	Description
Rural/Pastoral	View toward Project has rural/pastoral character. Built interventions not distinguishable from pre-development conditions
Rural/Pastoral with minimal development	View toward Project has rural/pastoral character. Built interventions low in prominence
Rural/Pastoral with distinguishable development	View toward Project has rural/pastoral character. Built interventions low to moderate prominence
Semi-urban/industrial	View toward Project has semi-urban or industrial character. Built interventions are high prominence
Urban/industrial	View toward Project has urban to industrial character. Built interventions very high prominence

9

Overview What We Heard What We Assessed Key Issue Review Mitigation, Monitoring and Follow-up Findings and Conclusions

Visual quality

Rural/pastoral

Rural/pastoral with minimal development

Rural/pastoral with distinguishable development

Rural/pastoral with distinguishable development

Semi-urban/industrial

Urban/industrial

10

Overview What We Heard What We Assessed Key Findings Mitigation, Monitoring and Follow-up Conclusions

Methods

Data collection & analysis:

- Viewshed analysis
- Field studies
- Visual quality analysis
- Modelling and photo simulations
- Prominence calculation

11

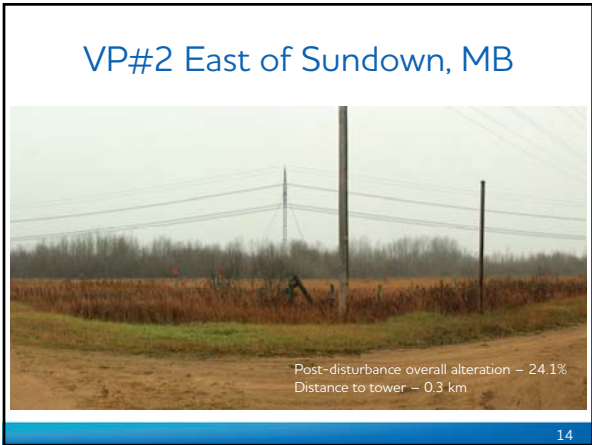
Overview What We Heard What We Assessed Key Issue Review Mitigation, Monitoring and Follow-up Findings and Conclusions

Visual quality

- Project visible from much of LAA
- Most baseline views are rural/pastoral
- The project will result in less than 1% additional visual disturbance to assessed views overall
- Towers will be overall moderately prominent

12







VP#4 La Verendrye Golf Course



Post-disturbance overall alteration – 0.4%
Distance to tower – 0.4 km

16

VP#10 – Trans Canada Trail,
Courchaine Bridge



Baseline alteration – 0.2%

17

VP#10 – Trans Canada Trail,
Courchaine Bridge



Post-disturbance overall alteration – 3.1%
Distance to tower – 0.1 km

18

VP#11 Red River Floodway, Chrypko Drive & Two Mile Road



19

VP#11 Red River Floodway, Chrypko Drive & Two Mile Road



20

VP#14 - Residences on Road 58N



21

VP#14 – Residences on Road 58N



22

Overview What We Heard What We Assessed Key Issue Review Mitigation, Monitoring and Follow-up Findings and Conclusions

Key mitigation measures


- Routing considered populated areas, parks, etc., paralleling existing transmission lines
- Locate towers during design process to reduce visual interference in areas of concern (e.g. Ridgeland Cemetery)
- Adhere to approved clearing boundaries delineated for project

23

Overview What We Heard What We Assessed Key Issue Review Mitigation, Monitoring and Follow-up Findings and Conclusions

Ongoing engagement

- Manitoba Hydro continues to engage with First Nations, Metis, and public
- Manitoba Hydro continues discussions with potentially affected landowners
- Manitoba Hydro will continue to share project information and be accessible to answer questions



24

Overview What We Heard What We Assessed Key Issue Review Mitigation, Monitoring and Follow-up Findings and Conclusions

Effects on visual quality

- Landscape character effects on average noticeable, not substantial (less than 1% average visual disturbance)
- Towers will be prominent from nearby viewpoints
- Changes in visual quality will be apparent from some viewpoints of importance,
- However, overall, project does not affect average visual character of the LAA

Project residual effects are considered to be not significant

25

Overview What We Heard What We Assessed Key Issue Review Mitigation, Monitoring and Follow-up Findings and Conclusions

Cumulative effects

- Planned projects will affect visual quality in RAA
- Effects include change in vegetation patterns, new structures
- Average baseline character class of RAA not anticipated to exceed rural/pastoral with distinguishable development

26
