

**MANITOBA-MINNESOTA  
TRANSMISSION PROJECT**

Clean Environment Commission Hearing



---

---

---

---

---

---

---

---

**Human environment**

Valued components assessed

Heritage Resources	Infrastructure & Services	Employment & Economy	Agriculture
Land & Resource Use	Visual Quality	Human Health Risk	Community Health

2

---

---

---

---

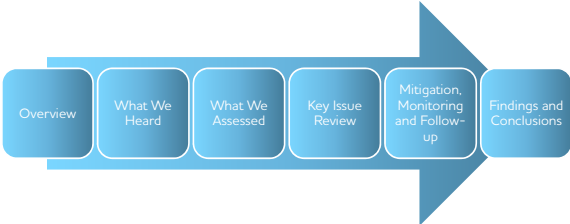
---

---

---

---

**Heritage resources  
presentation roadmap**



3

---

---

---

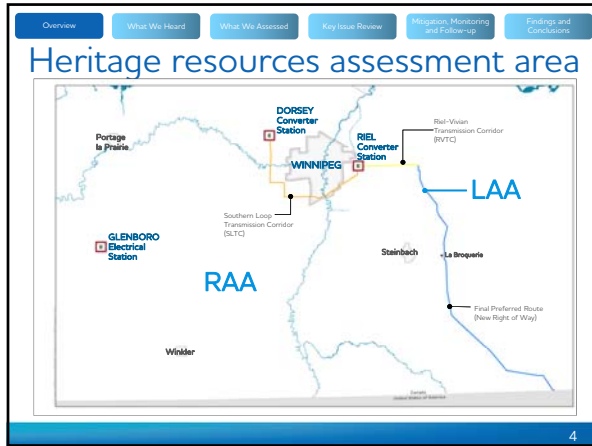
---

---

---

---

---




---

---

---

---

---

---

---

---

### Why heritage?

- **Heritage resources are:**
  - the tangible remains of past land use activities
  - intangible such as a cultural landscape
- First Nation and Metis concern
- Legislated requirements
- Scientific relevance and interest
- Public concern

---

---

---

---

---

---

---

---

### Heritage resources

**Potential Project Effects**

- Changes to known and potential heritage resources
- Changes to cemeteries

---

---

---

---

---

---

---

---

Overview What We Heard What We Assessed Key Issue Review Mitigation, Monitoring and Follow-up Findings and Conclusions

### Lessons learned

- Assessment followed similar approach to previous Manitoba Hydro projects
- Past Manitoba Hydro assessments developed construction monitoring protocols through a Cultural and Heritage Resources Protection Plan (CHRPP)

7

---

---

---

---

---

---

---

---

Overview What We Heard What We Assessed Key Issue Review Mitigation, Monitoring and Follow-up Findings and Conclusions

### Regulatory guidance

- *The Heritage Resources Act*

8

---

---

---

---

---

---

---

---

Overview What We Heard What We Assessed Key Issue Review Mitigation, Monitoring and Follow-up Findings and Conclusions

### What we heard (FNMEP)

- Importance of trails
- Importance of the area between Marchand and Sandilands
- The area south of Spur Woods Siding
- The Assiniboine River and Red River crossings within the Existing Corridor

9

---

---

---

---

---

---

---

---

Overview What We Heard What We Assessed Key Issue Review Mitigation, Monitoring and Follow-up Findings and Conclusions

### What we heard (PEP)

- Rat and Seine rivers
- The Bedford Ridge
- The Ridgeland Cemetery
- Homestead farms in the Marchand area
- A Centennial Farm

10

---

---

---

---

---

---

---

---

Overview What We Heard What We Assessed Key Issue Review Mitigation, Monitoring and Follow-up Findings and Conclusions

### Routing considerations

- Previously recorded archaeological sites
- Undeveloped areas
- Cemetery locations
- Potential archaeological sites

11

---

---

---

---

---

---

---

---

Overview What We Heard What We Assessed Key Issue Review Mitigation, Monitoring and Follow-up Findings and Conclusions

### Methods

- Establish existing conditions
- Review outcomes of Public Engagement Process and First Nations and Metis Engagement Process
- Review of previous research
- Predictive modelling
- Field assessments

12

---

---

---

---

---

---

---

---

Overview What We Heard **What We Assessed** Key Issue Review Mitigation, Monitoring and Follow-up Findings and Conclusions

### Predictive modelling variables

- Proximity to water
- Topography
- Soil type
- Proximity to known sites
- Past land use
- Proximity to historic trails

13

---

---

---

---

---

---

---

---

Overview What We Heard **What We Assessed** Key Issue Review Mitigation, Monitoring and Follow-up Findings and Conclusions

### What we assessed

- Archaeological sites (known and potential)
- Homestead sites
- Cemeteries

14

---

---

---

---

---

---

---

---

Overview What We Heard What We Assessed **Key Issue Review** Mitigation, Monitoring and Follow-up Findings and Conclusions

### Archaeological sites – key findings

- Final Preferred Route and Existing Transmission Corridor previously developed
- Centennial Farm
- Homestead sites recorded
- Ridgeland Cemetery

15

---

---

---

---

---

---

---

---

Overview What We Heard What We Assessed Key Issue Review **Mitigation, Monitoring and Follow-up** Findings and Conclusions

### Key mitigation measures

- Pre-construction review
- Implementation of Cultural and Heritage Resources Protection Plan (CHRPP)
- Monitoring
- Education

16

---

---

---

---

---

---

---

---

Overview What We Heard What We Assessed Key Issue Review **Mitigation, Monitoring and Follow-up** Findings and Conclusions

### Monitoring and follow-up

- Cultural Heritage Resources Protection Plan (CHRPP)
- Construction Environmental Protection Plans (CEPP)

17

---

---

---

---

---

---

---

---

Overview What We Heard What We Assessed Key Issue Review **Mitigation, Monitoring and Follow-up** Findings and Conclusions

### Effects

- Change in number of known and intact heritage resource sites and change in sites inadvertently exposed
- Change in cemeteries

18

---

---

---

---

---

---

---

---

Overview What We Heard What We Assessed Key Issue Review Mitigation, Monitoring and Follow-up Findings and Conclusions

### Residual effects

- No change to the number of intact heritage resources sites
- No change to the cemeteries

**Project residual effects are expected to be not significant**

19

---

---

---

---

---

---

---

---

Overview What We Heard What We Assessed Key Issue Review Mitigation, Monitoring and Follow-up Findings and Conclusions

### Cumulative effects

- Agricultural expansion
- Bipole III Transmission Project
- St. Vital Transmission Complex
- St. Norbert Bypass
- Headingly Bypass

**Project cumulative effects are expected to be not significant**

20

---

---

---

---

---

---

---

---

Overview What We Heard What We Assessed Key Issue Review Mitigation, Monitoring and Follow-up Findings and Conclusions

### Change to heritage resources sites

- Expected to be negligible within the Final Preferred Route

**Project effects are expected to be not significant**

21

---

---

---

---

---

---

---

---

Overview What We Heard What We Assessed Key Issue Review Mitigation, Monitoring and Follow-up Findings and Conclusions

### Change in cemeteries

- Expected to be negligible within the Final Preferred Route.

**Project effects are expected to be not significant**

22

---

---

---

---

---

---

---

---