

EXHIBIT NUMBER: MH-0 72
File Name: BI POLE III
Date: Oct 31, 2012
Received by: [Signature]
(Commission Secretary)

A COMPARISON OF MOOSE AND CARIBOU

Introduction

Moose



Boreal Woodland Caribou

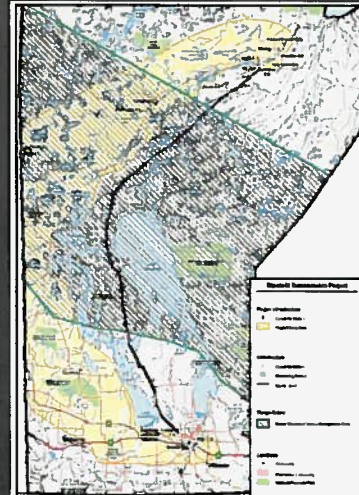


Distribution in Manitoba

Moose



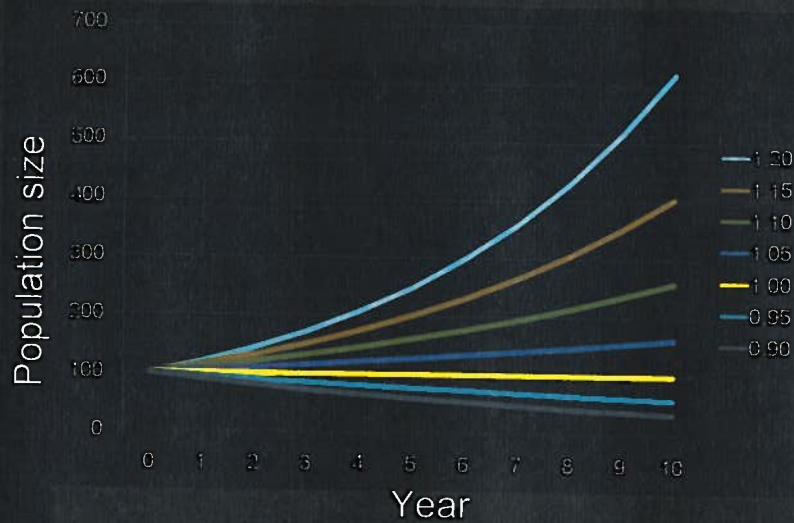
Boreal Woodland Caribou



	Moose	Boreal Woodland Caribou
Home range size	Up to 700 km ² Typically <100 km ²	Up to 2000 km ² Typically >400 km ²
Preferred habitat	-Young deciduous & mixed forest -Areas along waterways -Shrubland	-Mature coniferous forest -Peatlands
Diet	Woody browse, deciduous shrubs and aquatic plants	Lichens, Herbaceous vegetation
Density (excluding islands without predators)	Up to 2.0 moose/km ² Many cases up to 0.8 moose/km ² Hunted populations, commonly up to 0.4 moose/km ²	Not often measured directly Perhaps 0.02 - 0.15 caribou/km ²

	Moose	Boreal Woodland Caribou
Age of Maturity	2.5 years	1.5 to 2.5 years
Pregnancy rate	Up to 97%	70 to 96%
Twinning rate	Up to 80%, Typically 25-50%	0
Fecundity rate (calves born per female)	Up to 1.48	Up to 0.96
Annual Recruitment rate (calves surviving per female)	Up to 100, Highly variable year to year Commonly 30-60	Up to 60 Highly variable year to year Commonly 15 - 30
Adult female survival rate (without hunting)	88 to 98%, Typically about 90%	Typically 85 to 90%
Potential population growth rate (Lambda)	Up to 1.40 Commonly 1.10 - 1.20	Up to 1.17 Commonly <1.00 - 1.05

Potential population growth at various rates



Summary

- ◉ Susceptibility to predation
- ◉ Ability to recovery from population decline
- ◉ Status in Manitoba
 - Caribou species at risk and protected from hunting
 - Moose are a game species