

EXHIBIT NUMBER: DAU-001

File Name: Dauphin

Date: MARCH 20/07

Received by: _____
(Commission Secretary)

Alonsa Conservation District.

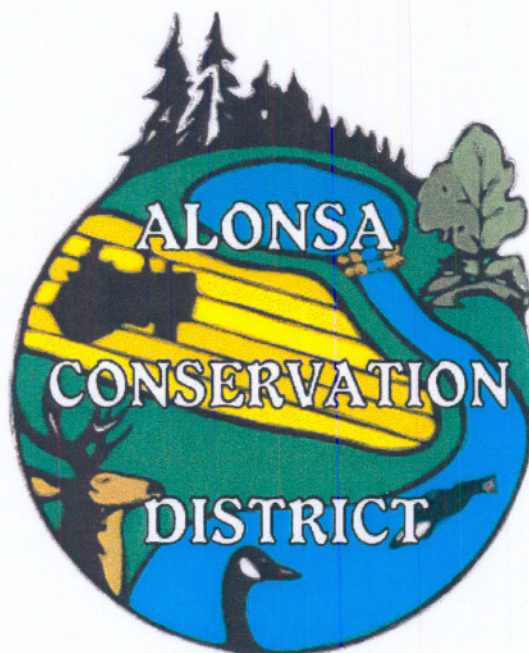
Summary of Water Quality Monitoring Results - 2006

Presentation to the Clean Environment Commission,

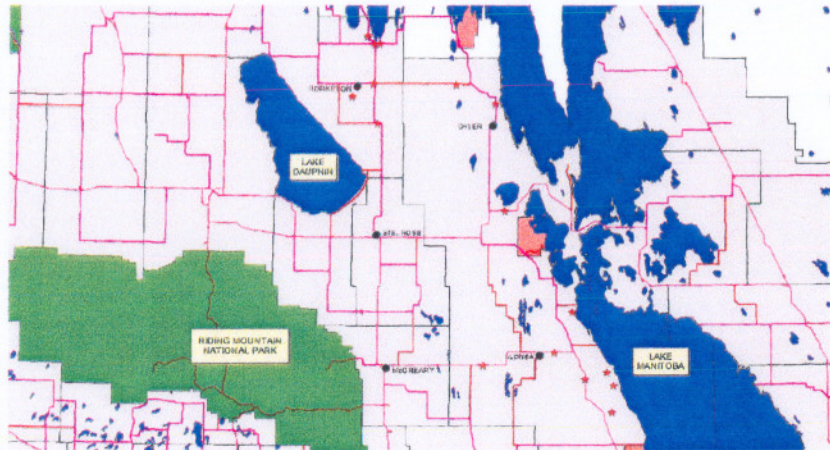
Hog Production Industry Review.

Dauphin, Manitoba,

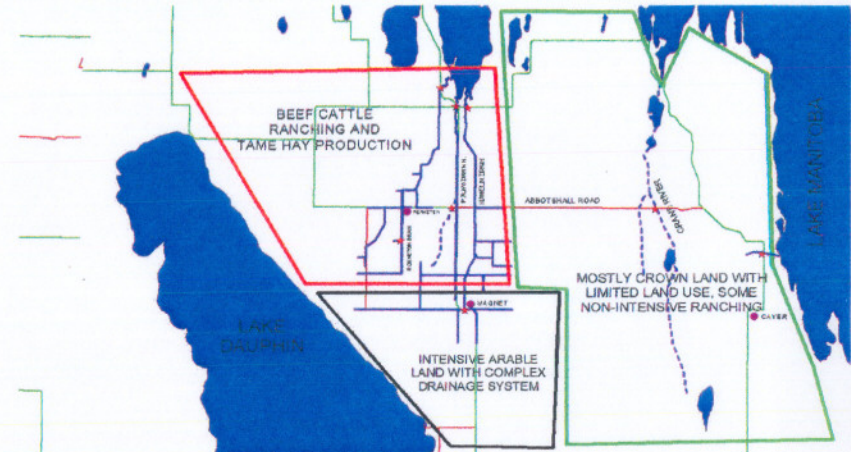
March 20th 2007.



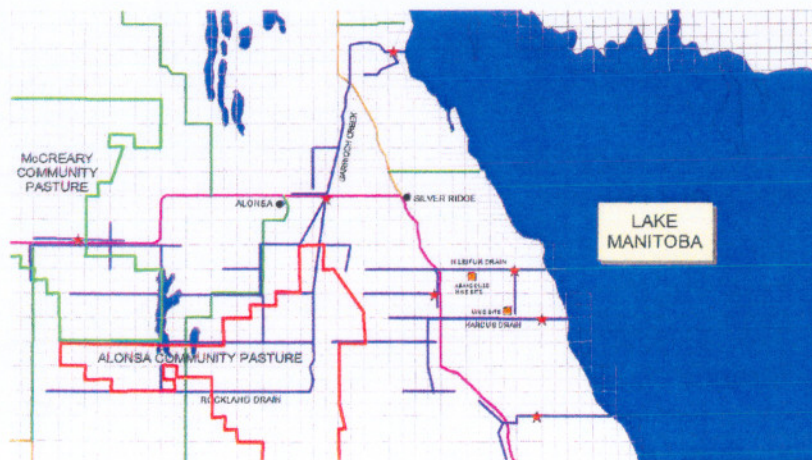
Sites of Water Quality Samples April 2006



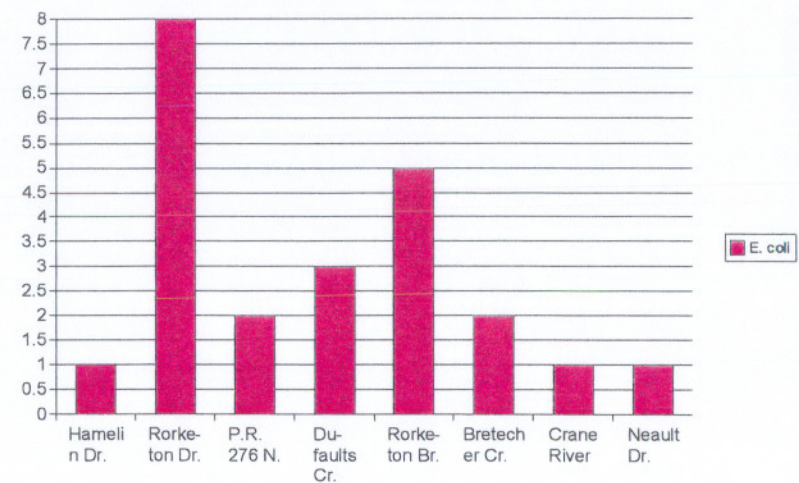
Predominant Land Use in the Northern Portion of the Watershed



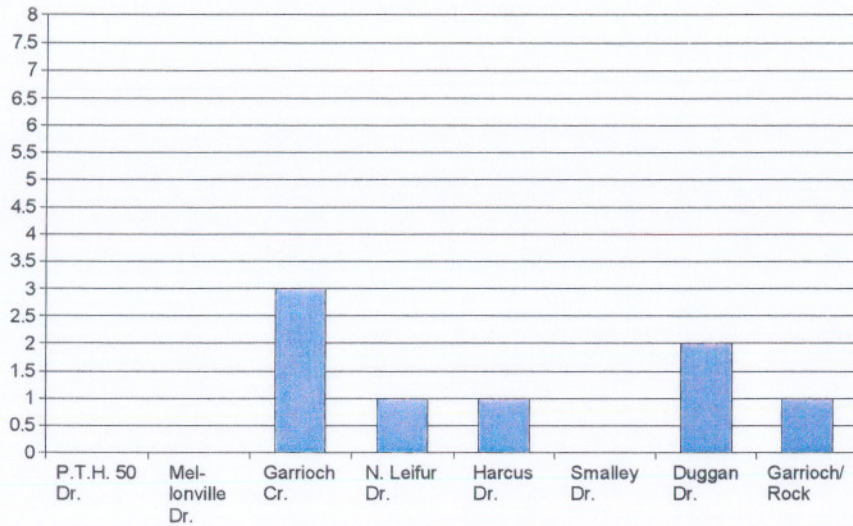
Simplified Drainage Map Showing Locations of South Samples



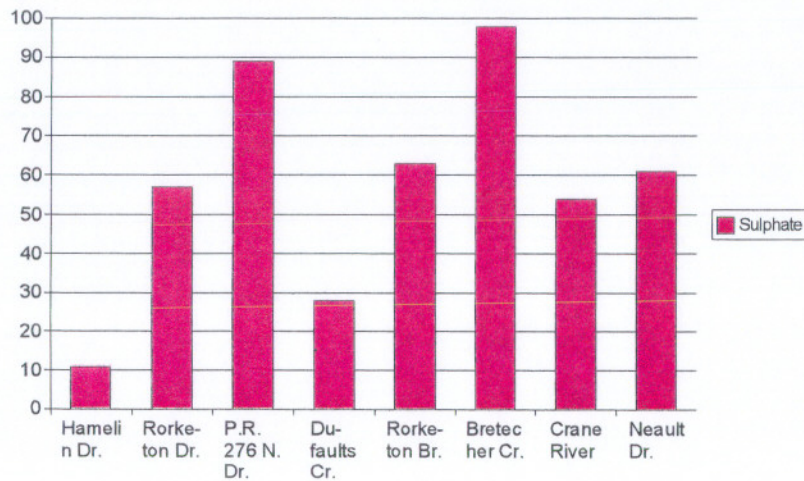
Results – E. coli (North Sites)



Results – E. coli (South Sites)



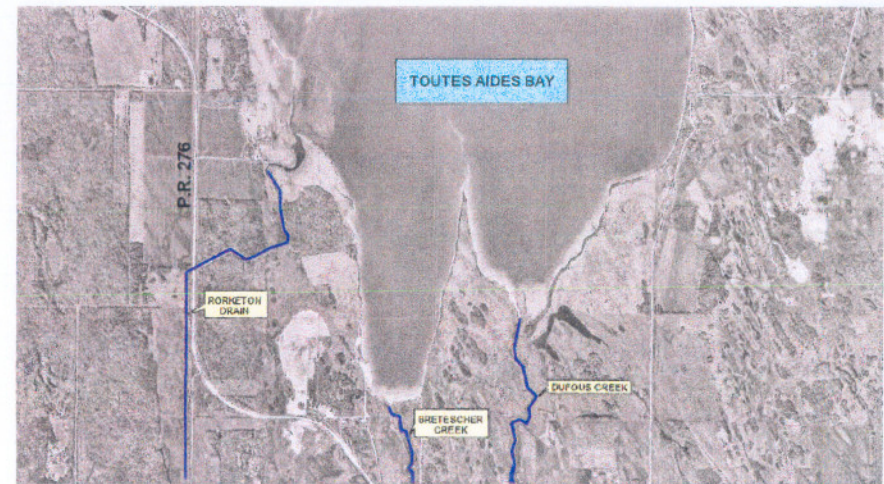
Results – Sulphate (North Sites)



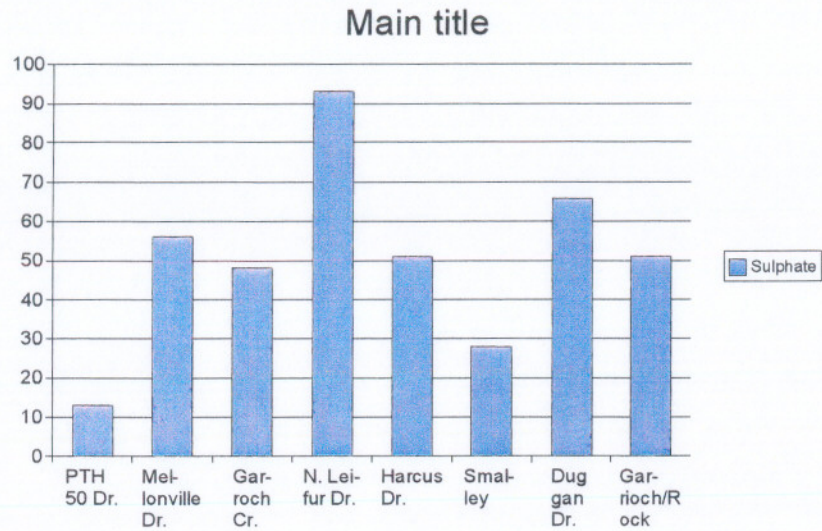
Lonely Lake Sub-Watershed Showing Inflows and Outlet



Toutes Aides Bay Showing Sedimentation from Outlets



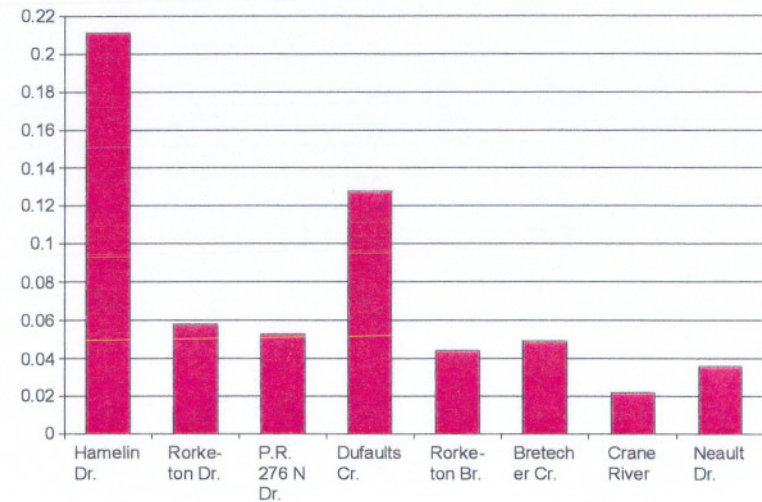
Results – Sulphate (South Sites)



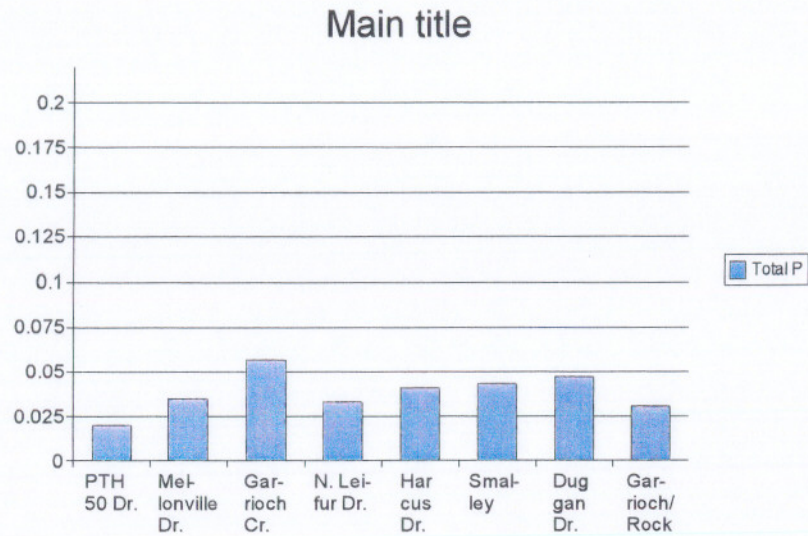
Leaking Berm on North Leifur Drain – January 2006



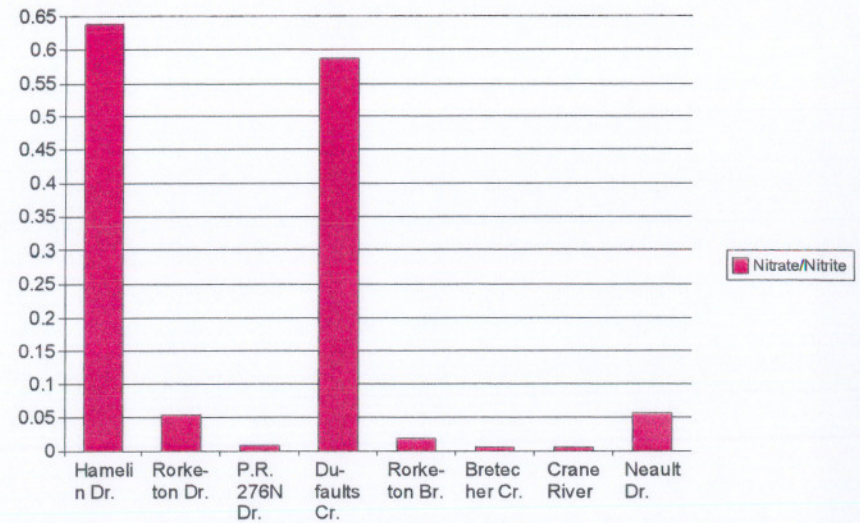
Results – Total P (North Sites)



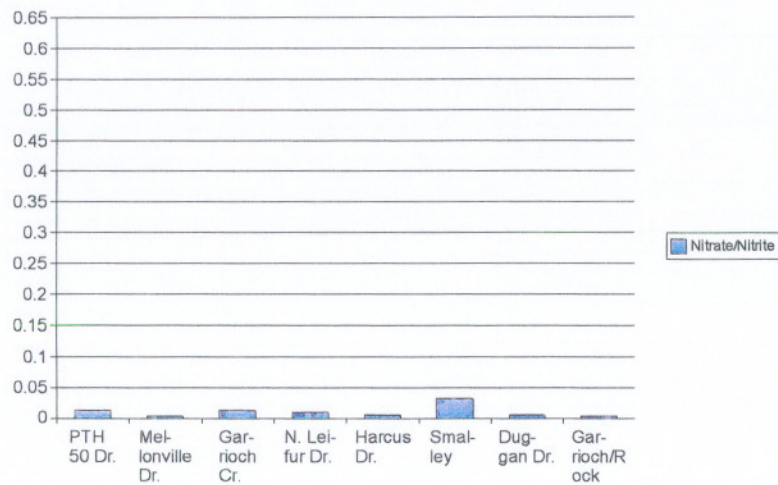
Results – Total P (South Sites)



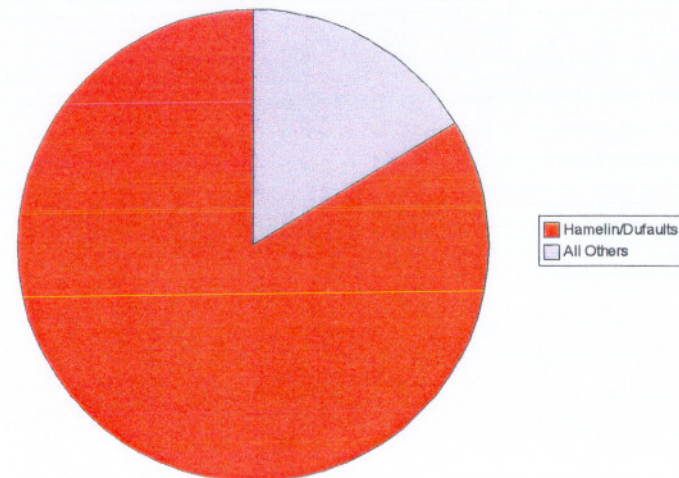
Results – Nitrate/Nitrite (North Sites)



Results – Nitrate/Nitrite (South Sites)



Hamelin Drain/Dufaults Creek as percentage of total measured Nitrate/Nitrite





Environmental Division

PRELIMINARY RESULTS

CASH CLIENT
ATTN: HARRY HARRIS
BOX 33
ALONSA MB R0H 0A0

Report On: 24-APR-06 04:14 PM

Lab Work Order #: L379494

Date Received: 17-APR-06

Project P.O. #:
Job Reference: ALONSA CONSERVATION DISTRICT
Legal Site Desc:
CofC Numbers:

Comments:

APPROVED BY: _____

PAUL NICOLAS

Project Manager

THIS REPORT SHALL NOT BE REPRODUCED EXCEPT IN FULL WITHOUT THE WRITTEN AUTHORITY OF THE LABORATORY.
ANY REMAINING SAMPLES WILL BE DISPOSED OF AFTER 30 DAYS FOLLOWING ANALYSIS. PLEASE CONTACT THE LAB IF YOU
REQUIRE ADDITIONAL SAMPLE STORAGE TIME.



ALS LABORATORY GROUP ANALYTICAL REPORT

Sample Details/Parameters		Result	Qualifier*	D.L.	Units	Extracted	Analyzed	By	Batch
L379494-1	PTH.50 DRAIN - 9:40 A.M.								
Sample By:	CLIENT on 16-APR-06								
Matrix:	WATER								
	Total Phosphorous	0.020		0.001	mg/L		24-APR-06	MEB	R392198
	Total Coliform and E.coli								
	Total Coliform	>200		0	MPN/100mL		18-APR-06	AOB	R390298
	Escherichia Coli	0		0	MPN/100mL		18-APR-06	AOB	R390298
	WP2 Drinking Water								
	Copper (Cu)-Extractable	0.0006		0.0004	mg/L		18-APR-06	DAG	R390559
	Zinc (Zn)-Extractable	<0.005		0.005	mg/L		18-APR-06	DAG	R390559
	Hardness-grains/IMPgal	9.21		0.01	gm/IMPgal		19-APR-06		
	Hardness-grains/USgal	7.68		0.01	gm/USgal		19-APR-06		
	Hardness (as CaCO3)	131		0.2	mg/L		19-APR-06		
	TDS (Calculated from EC)	180		20	mg/L		19-APR-06		
	pH								
	PH	7.85		0.01	pH units		18-APR-06	DXN	R390564
	Sulphate Soluble								
	Sulphate (SO4) - Soluble	13		9	mg/L		24-APR-06	CLM	R392123
	Routine Metals								
	Calcium (Ca)-Extractable	30.4		0.05	mg/L		18-APR-06	DAG	R390559
	Potassium (K)-Extractable	4.97		0.05	mg/L		18-APR-06	DAG	R390559
	Magnesium (Mg)-Extractable	13.5		0.01	mg/L		18-APR-06	DAG	R390559
	Sodium (Na)-Extractable	1.84		0.02	mg/L		18-APR-06	DAG	R390559
	Iron (Fe)-Extractable	<0.01		0.01	mg/L		18-APR-06	DAG	R390559
	Manganese (Mn)-Extractable	0.0019		0.0002	mg/L		18-APR-06	DAG	R390559
	Nitrate + Nitrite Soluble								
	Nitrate+Nitrite-N - Soluble	0.014		0.005	mg/L		18-APR-06	CLM	R390585
	Conductivity								
	Conductivity	271		0.4	umhos/cm		18-APR-06	DXN	R390564
	Chloride Soluble								
	Chloride (Cl) - Soluble	<9		9	mg/L		24-APR-06	CLM	R392123
L379494-2	HAMELIN DRAIN - 10:30 A.M.								
Sample By:	CLIENT on 16-APR-06								
Matrix:	WATER								
	Total Phosphorous	0.211		0.001	mg/L		24-APR-06	MEB	R392198
	Total Coliform and E.coli								
	Total Coliform	>200		0	MPN/100mL		18-APR-06	AOB	R390298
	Escherichia Coli	1		0	MPN/100mL		18-APR-06	AOB	R390298
	WP2 Drinking Water								
	Copper (Cu)-Extractable	0.0025		0.0004	mg/L		18-APR-06	DAG	R390559
	Zinc (Zn)-Extractable	0.006		0.005	mg/L		18-APR-06	DAG	R390559
	Hardness-grains/IMPgal	8.54		0.01	gm/IMPgal		19-APR-06		
	Hardness-grains/USgal	7.12		0.01	gm/USgal		19-APR-06		
	Hardness (as CaCO3)	122		0.2	mg/L		19-APR-06		
	TDS (Calculated from EC)	190		20	mg/L		19-APR-06		
	pH								
	PH	7.78		0.01	pH units		18-APR-06	DXN	R390564
	Sulphate Soluble								
	Sulphate (SO4) - Soluble	11		9	mg/L		24-APR-06	CLM	R392123
	Routine Metals								
	Calcium (Ca)-Extractable	26.0		0.05	mg/L		18-APR-06	DAG	R390559
	Potassium (K)-Extractable	8.75		0.05	mg/L		18-APR-06	DAG	R390559

ALS LABORATORY GROUP ANALYTICAL REPORT

Sample Details/Parameters	Result	Qualifier*	D.L.	Units	Extracted	Analyzed	By	Batch
L379494-2 HAMELIN DRAIN - 10:30 A.M. Sample By: CLIENT on 16-APR-06 Matrix: WATER								
WP2 Drinking Water								
Routine Metals								
Magnesium (Mg)-Extractable	13.8		0.01	mg/L		18-APR-06	DAG	R390559
Sodium (Na)-Extractable	6.28		0.02	mg/L		18-APR-06	DAG	R390559
Iron (Fe)-Extractable	0.02		0.01	mg/L		18-APR-06	DAG	R390559
Manganese (Mn)-Extractable	0.0049		0.0002	mg/L		18-APR-06	DAG	R390559
Nitrate + Nitrite Soluble								
Nitrate+Nitrite-N - Soluble	0.639		0.005	mg/L		18-APR-06	CLM	R390585
Conductivity								
Conductivity	287		0.4	umhos/cm		18-APR-06	DXN	R390564
Chloride Soluble								
Chloride (Cl) - Soluble	10		9	mg/L		24-APR-06	CLM	R392123
L379494-3 RORKETON DRAIN - 10:45 A.M. Sample By: CLIENT on 16-APR-06 Matrix: WATER								
Total Phosphorous	0.058		0.001	mg/L		24-APR-06	MEB	R392198
Total Coliform and E.coli								
Total Coliform	>200		0	MPN/100mL		18-APR-06	AOB	R390298
Escherichia Coli	8		0	MPN/100mL		18-APR-06	AOB	R390298
WP2 Drinking Water								
Copper (Cu)-Extractable	0.0015		0.0004	mg/L		18-APR-06	DAG	R390559
Zinc (Zn)-Extractable	0.009		0.005	mg/L		18-APR-06	DAG	R390559
Hardness-grains/IMPgal	12.4		0.01	gm/IMPgal		19-APR-06		
Hardness-grains/USgal	10.3		0.01	gm/USgal		19-APR-06		
Hardness (as CaCO3)	176		0.2	mg/L		19-APR-06		
TDS (Calculated from EC)	230		20	mg/L		19-APR-06		
pH								
PH	7.93		0.01	pH units		18-APR-06	DXN	R390564
Sulphate Soluble								
Sulphate (SO4) - Soluble	57		9	mg/L		24-APR-06	CLM	R392123
Routine Metals								
Calcium (Ca)-Extractable	30.3		0.05	mg/L		18-APR-06	DAG	R390559
Potassium (K)-Extractable	4.11		0.05	mg/L		18-APR-06	DAG	R390559
Magnesium (Mg)-Extractable	24.4		0.01	mg/L		18-APR-06	DAG	R390559
Sodium (Na)-Extractable	3.63		0.02	mg/L		18-APR-06	DAG	R390559
Iron (Fe)-Extractable	<0.01		0.01	mg/L		18-APR-06	DAG	R390559
Manganese (Mn)-Extractable	0.0058		0.0002	mg/L		18-APR-06	DAG	R390559
Nitrate + Nitrite Soluble								
Nitrate+Nitrite-N - Soluble	0.054		0.005	mg/L		18-APR-06	CLM	R390585
Conductivity								
Conductivity	356		0.4	umhos/cm		18-APR-06	DXN	R390564
Chloride Soluble								
Chloride (Cl) - Soluble	<9		9	mg/L		24-APR-06	CLM	R392123
L379494-4 PR276 NORTH DR. - 10:55 A.M. Sample By: CLIENT on 16-APR-06 Matrix: WATER								
Total Phosphorous	0.053		0.001	mg/L		24-APR-06	MEB	R392198
Total Coliform and E.coli								
Total Coliform	>200		0	MPN/100mL		18-APR-06	AOB	R390298

ALS LABORATORY GROUP ANALYTICAL REPORT

Sample Details/Parameters	Result	Qualifier*	D.L.	Units	Extracted	Analyzed	By	Batch
L379494-4 PR276 NORTH DR. - 10:55 A.M. Sample By: CLIENT on 16-APR-06 Matrix: WATER								
Total Coliform and E.coli								
Escherichia Coli	2		0	MPN/100mL		18-APR-06	AOB	R390298
WP2 Drinking Water								
Copper (Cu)-Extractable	0.0019		0.0004	mg/L		18-APR-06	DAG	R390559
Zinc (Zn)-Extractable	0.009		0.005	mg/L		18-APR-06	DAG	R390559
Hardness-grains/IMPgal	13.1		0.01	gm/IMPgal		19-APR-06		
Hardness-grains/USgal	10.9		0.01	gm/USgal		19-APR-06		
Hardness (as CaCO3)	186		0.2	mg/L		19-APR-06		
TDS (Calculated from EC)	440		20	mg/L		19-APR-06		
pH								
PH	7.53		0.01	pH units		18-APR-06	DXN	R390564
Sulphate Soluble								
Sulphate (SO4) - Soluble	89		9	mg/L		24-APR-06	CLM	R392123
Routine Metals								
Calcium (Ca)-Extractable	32.9		0.05	mg/L		18-APR-06	DAG	R390559
Potassium (K)-Extractable	8.02		0.05	mg/L		18-APR-06	DAG	R390559
Magnesium (Mg)-Extractable	25.3		0.01	mg/L		18-APR-06	DAG	R390559
Sodium (Na)-Extractable	54.8		0.02	mg/L		18-APR-06	DAG	R390559
Iron (Fe)-Extractable	<0.01		0.01	mg/L		18-APR-06	DAG	R390559
Manganese (Mn)-Extractable	0.0177		0.0002	mg/L		18-APR-06	DAG	R390559
Nitrate + Nitrite Soluble								
Nitrate+Nitrite-N - Soluble	0.008		0.005	mg/L		18-APR-06	CLM	R390585
Conductivity								
Conductivity	683		0.4	umhos/cm		18-APR-06	DXN	R390564
Chloride Soluble								
Chloride (Cl) - Soluble	99		9	mg/L		24-APR-06	CLM	R392123
L379494-5 DFAULTS CREEK - 11:10 A.M. Sample By: CLIENT on 16-APR-06 Matrix: WATER								
Total Phosphorous	0.128		0.001	mg/L		24-APR-06	MEB	R392198
Total Coliform and E.coli								
Total Coliform	>200		0	MPN/100mL		18-APR-06	AOB	R390298
Escherichia Coli	3		0	MPN/100mL		18-APR-06	AOB	R390298
WP2 Drinking Water								
Copper (Cu)-Extractable	0.0037		0.0004	mg/L		18-APR-06	DAG	R390559
Zinc (Zn)-Extractable	0.009		0.005	mg/L		18-APR-06	DAG	R390559
Hardness-grains/IMPgal	8.33		0.01	gm/IMPgal		19-APR-06		
Hardness-grains/USgal	6.94		0.01	gm/USgal		19-APR-06		
Hardness (as CaCO3)	119		0.2	mg/L		19-APR-06		
TDS (Calculated from EC)	230		20	mg/L		19-APR-06		
pH								
PH	7.72		0.01	pH units		18-APR-06	DXN	R390564
Sulphate Soluble								
Sulphate (SO4) - Soluble	28		9	mg/L		24-APR-06	CLM	R392123
Routine Metals								
Calcium (Ca)-Extractable	24.5		0.05	mg/L		18-APR-06	DAG	R390559
Potassium (K)-Extractable	7.74		0.05	mg/L		18-APR-06	DAG	R390559
Magnesium (Mg)-Extractable	14.0		0.01	mg/L		18-APR-06	DAG	R390559
Sodium (Na)-Extractable	18.3		0.02	mg/L		18-APR-06	DAG	R390559

ALS LABORATORY GROUP ANALYTICAL REPORT

Sample Details/Parameters	Result	Qualifier*	D.L.	Units	Extracted	Analyzed	By	Batch
L379494-5 DFAULTS CREEK - 11:10 A.M. Sample By: CLIENT on 16-APR-06 Matrix: WATER								
WP2 Drinking Water								
Routine Metals								
Iron (Fe)-Extractable	0.03		0.01	mg/L		18-APR-06	DAG	R390559
Manganese (Mn)-Extractable	0.0066		0.0002	mg/L		18-APR-06	DAG	R390559
Nitrate + Nitrite Soluble								
Nitrate+Nitrite-N - Soluble	0.586		0.005	mg/L		18-APR-06	CLM	R390585
Conductivity								
Conductivity	356		0.4	umhos/cm		18-APR-06	DXN	R390564
Chloride Soluble								
Chloride (Cl) - Soluble	28		9	mg/L		24-APR-06	CLM	R392123
L379494-6 RORKETON BRIDGE - 11:15 A.M. Sample By: CLIENT on 16-APR-06 Matrix: WATER								
Total Phosphorous	0.044		0.001	mg/L		24-APR-06	MEB	R392198
Total Coliform and E.coli								
Total Coliform	>200		0	MPN/100mL		18-APR-06	AOB	R390298
Escherichia Coli	5		0	MPN/100mL		18-APR-06	AOB	R390298
WP2 Drinking Water								
Copper (Cu)-Extractable	0.0017		0.0004	mg/L		18-APR-06	DAG	R390559
Zinc (Zn)-Extractable	0.008		0.005	mg/L		18-APR-06	DAG	R390559
Hardness-grains/IMPgal	11.4		0.01	gm/IMPgal		19-APR-06		
Hardness-grains/USgal	9.49		0.01	gm/USgal		19-APR-06		
Hardness (as CaCO3)	162		0.2	mg/L		19-APR-06		
TDS (Calculated from EC)	280		20	mg/L		19-APR-06		
pH								
PH	7.83		0.01	pH units		18-APR-06	DXN	R390564
Sulphate Soluble								
Sulphate (SO4) - Soluble	63		9	mg/L		24-APR-06	CLM	R392123
Routine Metals								
Calcium (Ca)-Extractable	29.8		0.05	mg/L		18-APR-06	DAG	R390559
Potassium (K)-Extractable	5.38		0.05	mg/L		18-APR-06	DAG	R390559
Magnesium (Mg)-Extractable	21.4		0.01	mg/L		18-APR-06	DAG	R390559
Sodium (Na)-Extractable	14.7		0.02	mg/L		18-APR-06	DAG	R390559
Iron (Fe)-Extractable	<0.01		0.01	mg/L		18-APR-06	DAG	R390559
Manganese (Mn)-Extractable	0.0031		0.0002	mg/L		18-APR-06	DAG	R390559
Nitrate + Nitrite Soluble								
Nitrate+Nitrite-N - Soluble	0.019		0.005	mg/L		18-APR-06	CLM	R390585
Conductivity								
Conductivity	426		0.4	umhos/cm		18-APR-06	DXN	R390564
Chloride Soluble								
Chloride (Cl) - Soluble	25		9	mg/L		24-APR-06	CLM	R392123
L379494-7 BRETECHER CREEK - 11:20 A.M. Sample By: CLIENT on 16-APR-06 Matrix: WATER								
Total Phosphorous	0.049		0.001	mg/L		24-APR-06	MEB	R392198
Total Coliform and E.coli								
Total Coliform	>200		0	MPN/100mL		18-APR-06	AOB	R390298
Escherichia Coli	2		0	MPN/100mL		18-APR-06	AOB	R390298
WP2 Drinking Water								