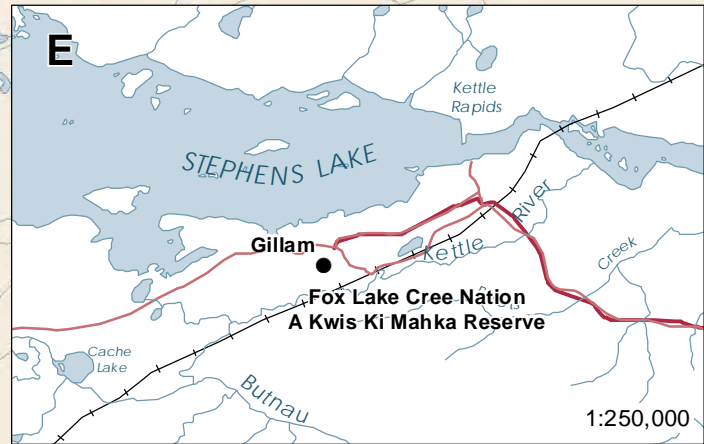
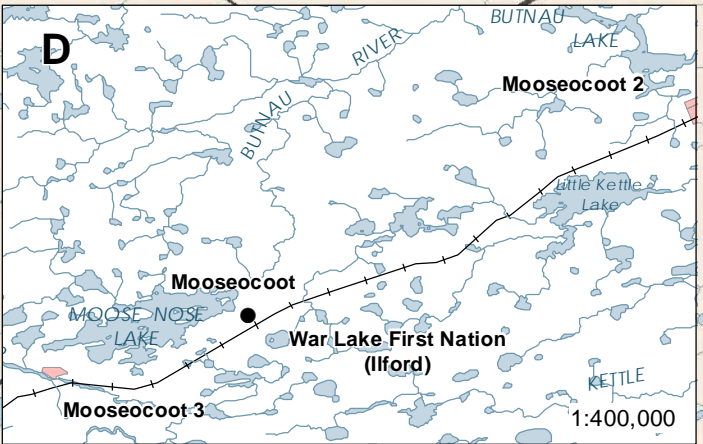
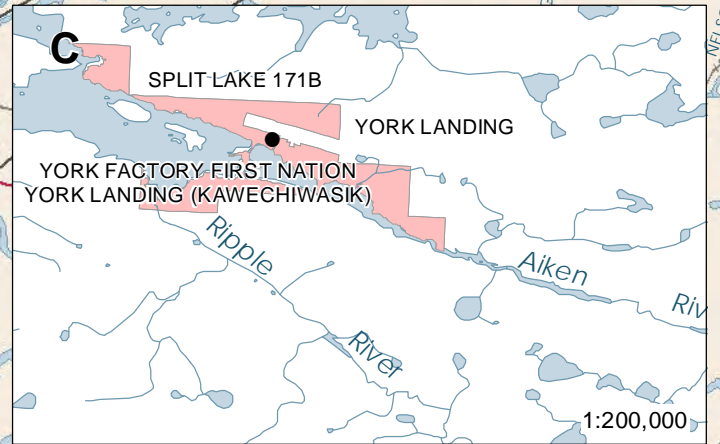
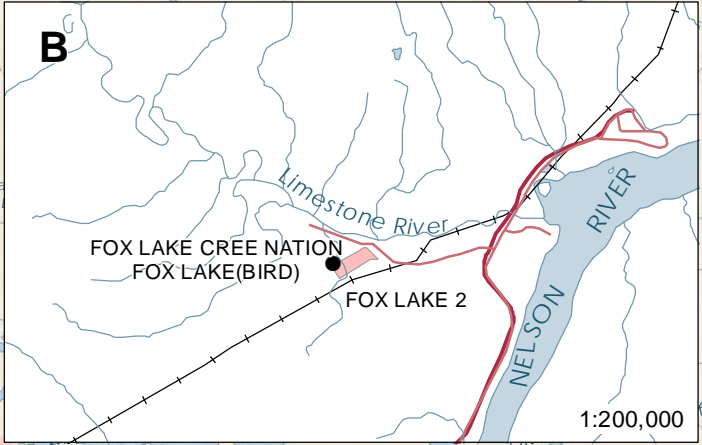
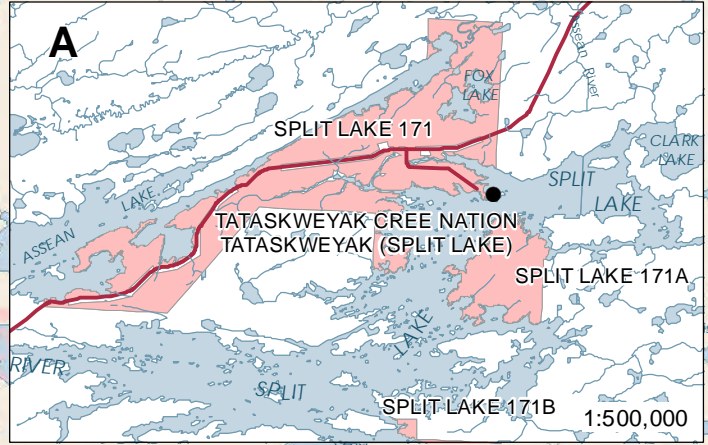
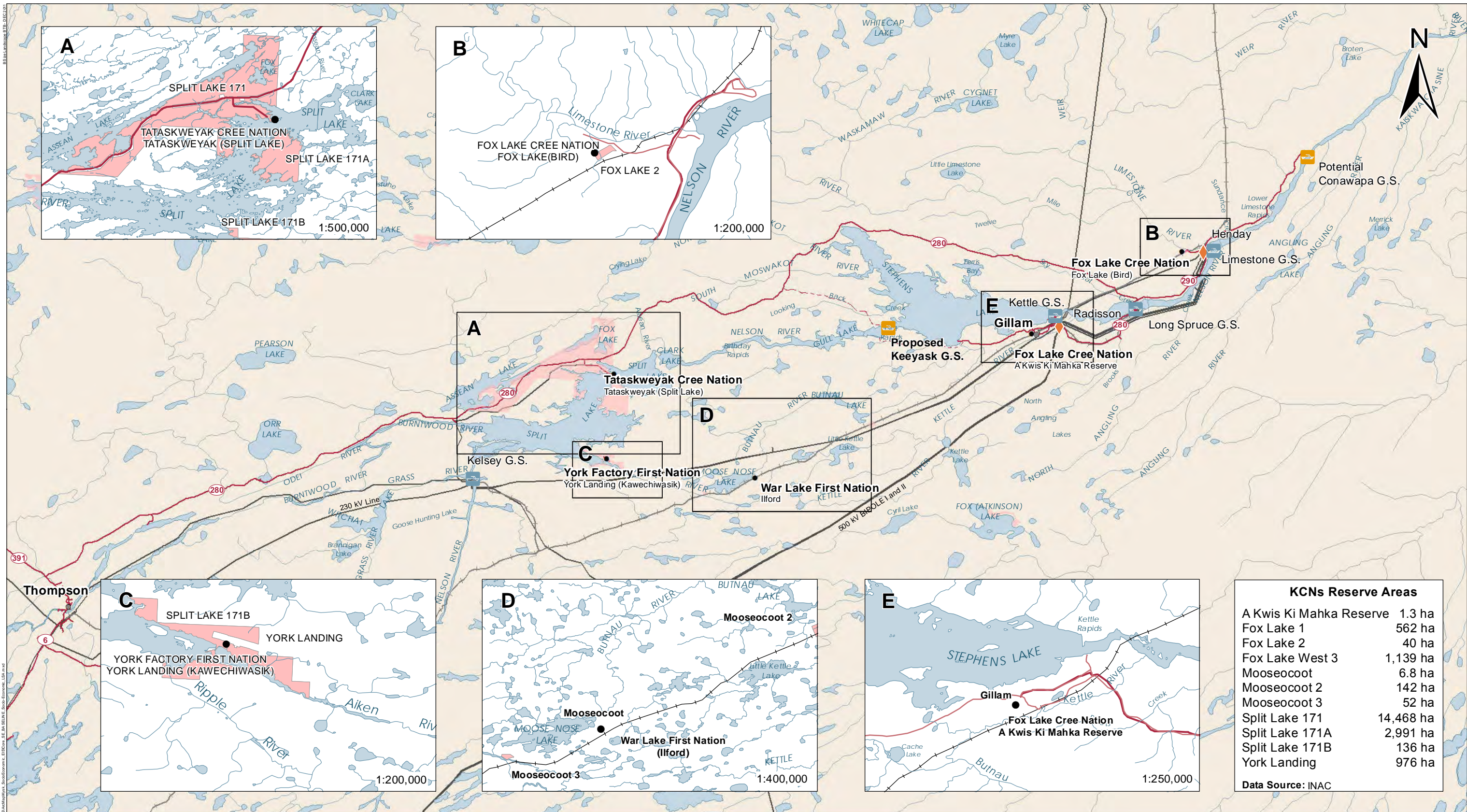


**Panel 4d: Socio-economic, Resource Use and
Heritage Resources Panel
Maps**



KCNs Reserve Areas	
A Kwis Ki Mahka Reserve	1.3 ha
Fox Lake 1	562 ha
Fox Lake 2	40 ha
Fox Lake West 3	1,139 ha
Mooseocoot	6.8 ha
Mooseocoot 2	142 ha
Mooseocoot 3	52 ha
Split Lake 171	14,468 ha
Split Lake 171A	2,991 ha
Split Lake 171B	136 ha
York Landing	976 ha

Data Source: INAC



DATA SOURCE:
Manitoba Hydro, NTS, Stantec Consulting Ltd.

CREATED BY:
Stantec Consulting Ltd.

COORDINATE SYSTEM:
UTM NAD 1983 Z15N

DATE CREATED:
16-DEC-10

REVISION DATE:
18-MAY-12

VERSION NO:
1.0

QA/QC:
GS/YYY/MWZ

0 8.5 17 Kilometres
0 7 14 Miles

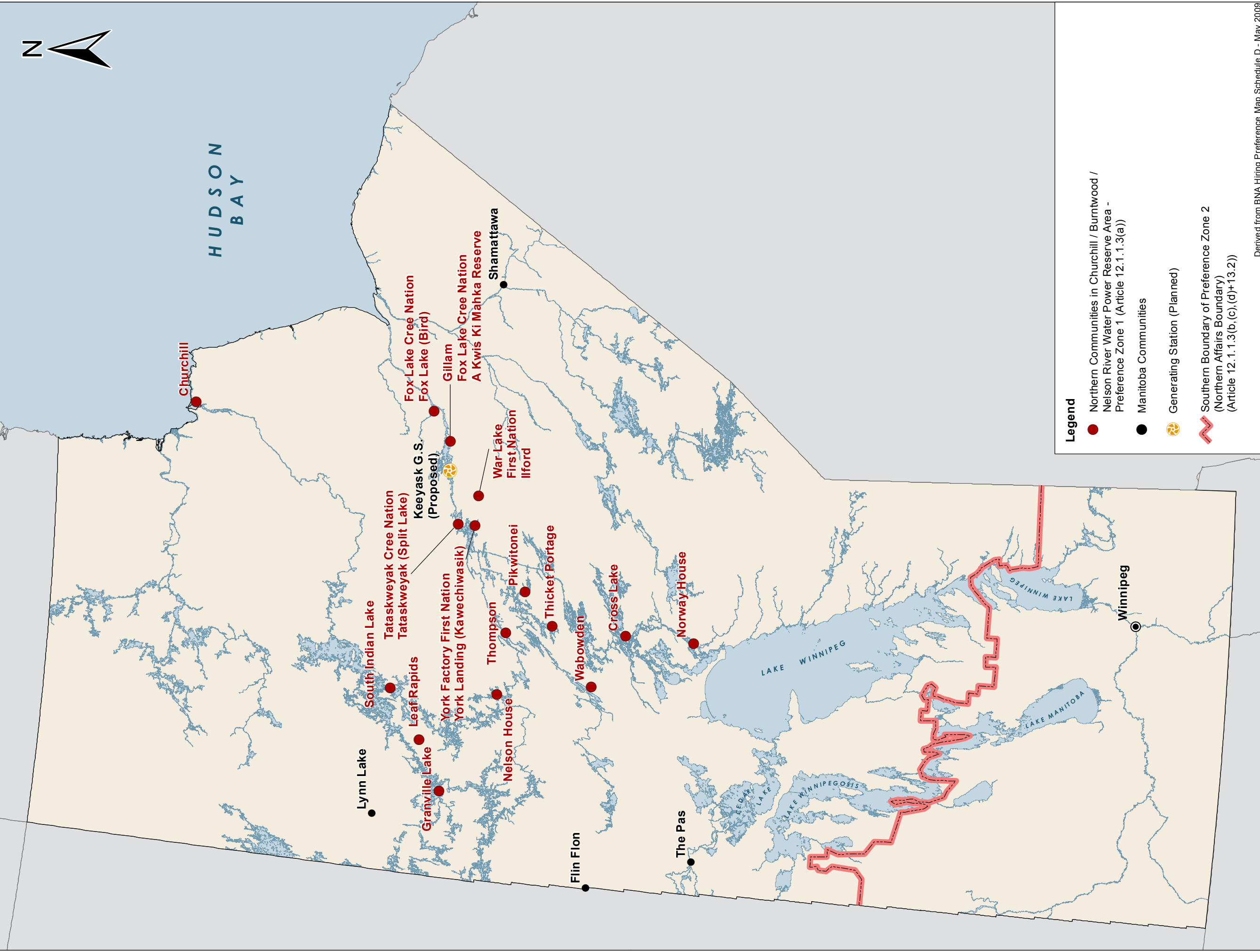
Legend

- Generating Station (Planned)
- Highway
- First Nation Reserve
- Generating Station (Existing)
- Proposed Access Road
- Waterbody
- Converter Station
- Rail
- First Nation Community
- Existing Transmission Line
- Town/City

Communities depicted on the map are included in the Socio-Economic Local Study Area

Socio-Economic Local Study Area

Map 1-1



Legend

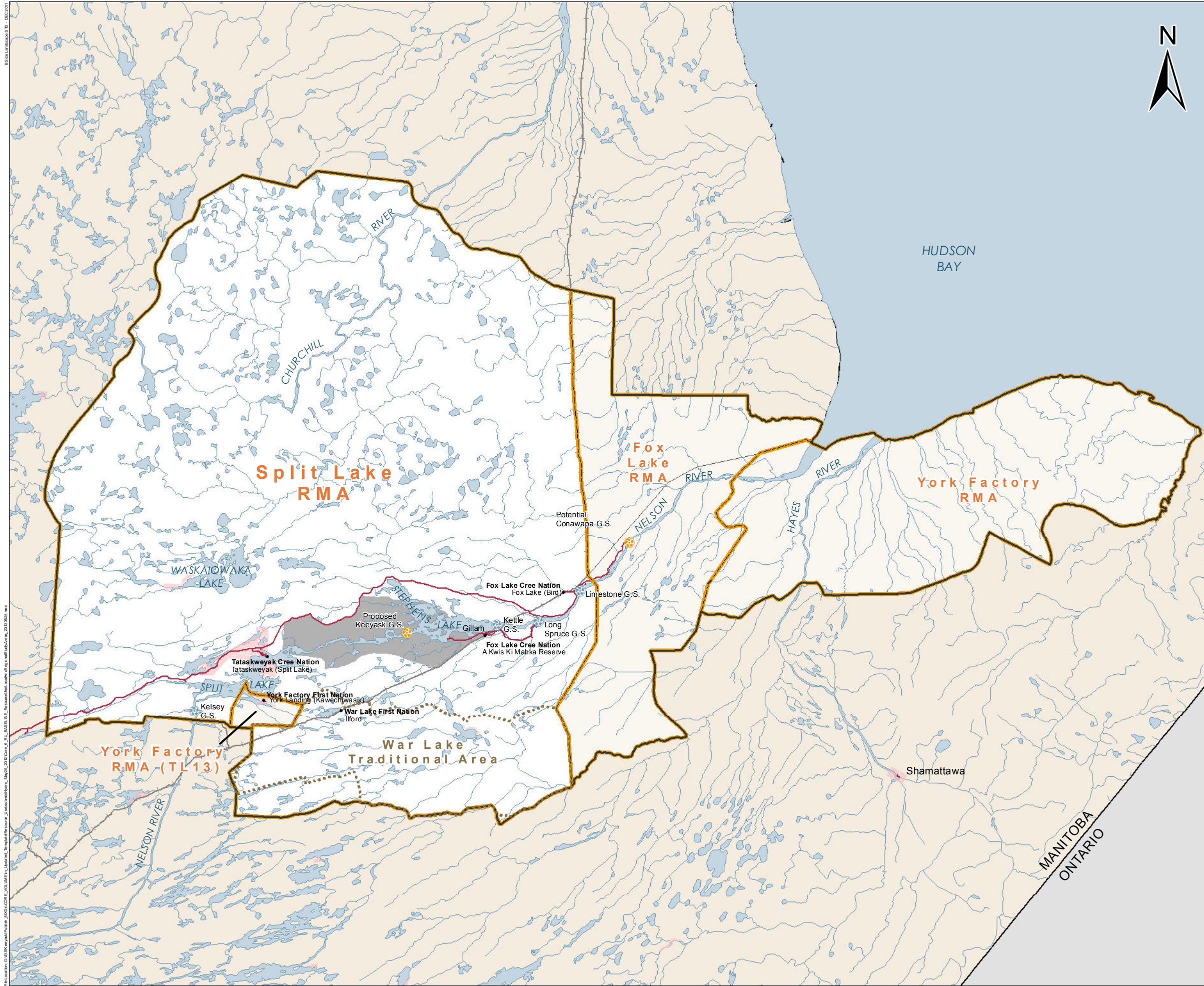
- Northern Communities in Churchill / Burntwood / Nelson River Water Power Reserve Area - Preference Zone 1 (Article 12.1.1.3(a))
- Manitoba Communities
- ⚙ Generating Station (Planned)
- ⚡ Southern Boundary of Preference Zone 2 (Northern Affairs Boundary) (Article 12.1.1.3(b),(c),(d)+13.2))

Derived from BNA Hiring Preference Map Schedule D - May 2009

DATA SOURCE:
Manitoba Hydro, NTS, Stantec Consulting Ltd., Government of Canada

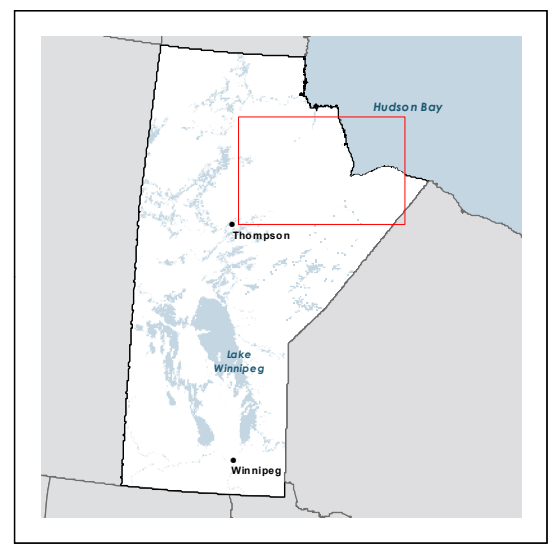
CREATED BY: Stantec Consulting Ltd.		DATE CREATED: 18-JAN-12	REVISION DATE: 24-MAY-12
COORDINATE SYSTEM: UTM NAD 1983 Z15N		VERSION NO: 1.0	QA/QC: GS/YY/MWZ

Socio-Economic Regional Study Area



Legend

- Local Study Area
- Regional Study Area
- Resource Management Areas
- War Lake Traditional Area
- First Nation Reserve
- Highways
- Rail
- Abandoned Rail

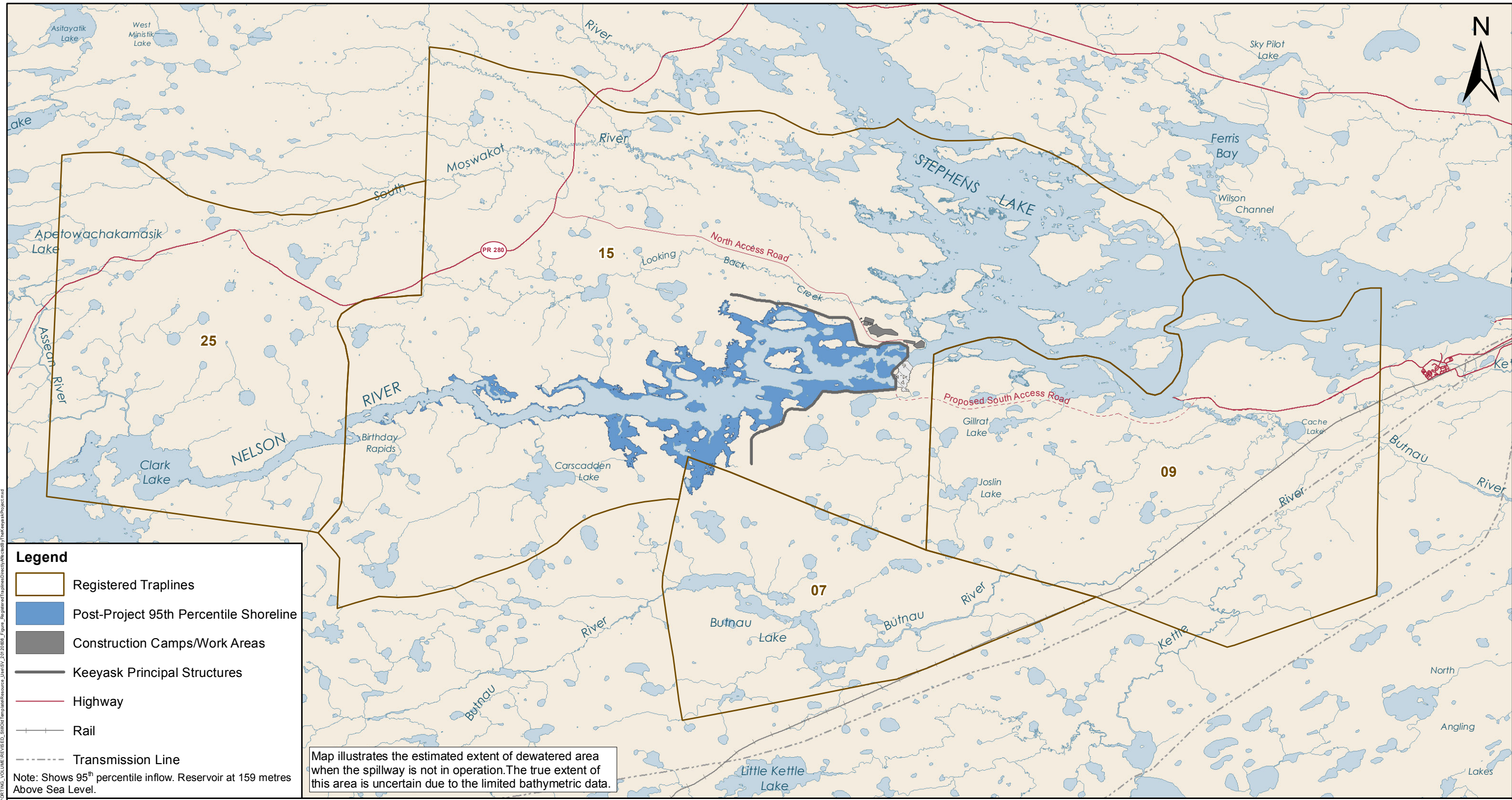


DATA SOURCE:
Manitoba Conservation and Water Stewardship

CREATED BY:
North/South Consultants Inc.

COORDINATE SYSTEM: UTM NAD 1983 Z 15N	DATE CREATED: 24-MAY-12	REVISION DATE: 28-MAY-12
		VERSION NO: 1.0 QA/QC: CMP/MKW/MWZ

Resource Use
Local and Regional
Study Areas

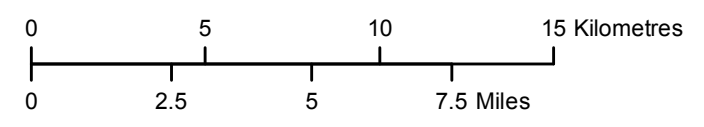


Legend

- Registered Traplines
- Post-Project 95th Percentile Shoreline
- Construction Camps/Work Areas
- Keeyask Principal Structures
- Highway
- Rail
- Transmission Line

Note: Shows 95th percentile inflow. Reservoir at 159 metres Above Sea Level.

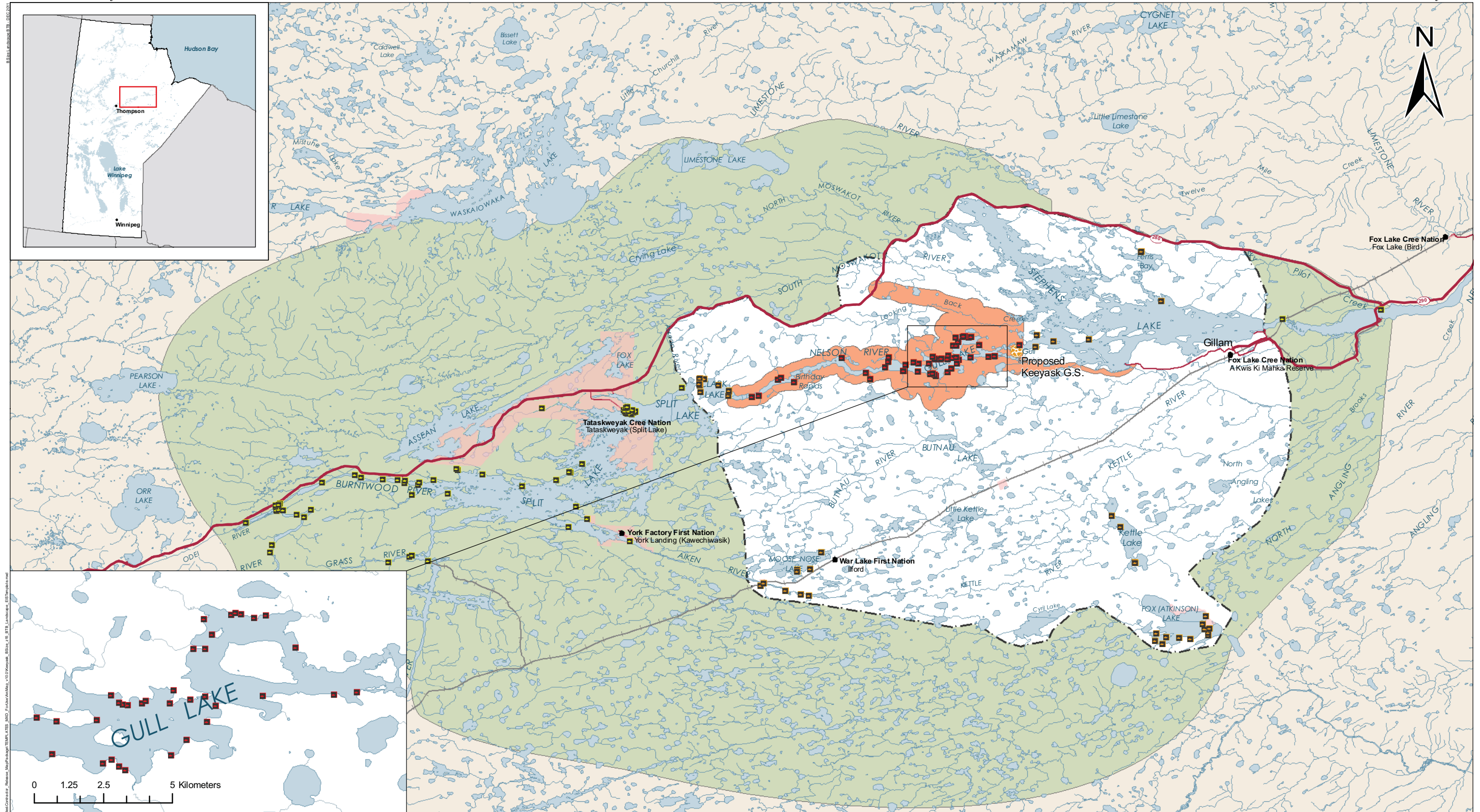
Map illustrates the estimated extent of dewatered area when the spillway is not in operation. The true extent of this area is uncertain due to the limited bathymetric data.



Projection: UTM Zone 15, NAD 83
 Data Source: NTS base 1:50 000
 Stephens Lake Shoreline - Quickbird@Digitalglobe, 2006
 Nelson River Shoreline modelled by Manitoba Hydro

Registered Traplines Directly Affected by the Keeyask Project

File Location: C:\EBS\Keeyask\Subarea_Maps\SUPPORTING_VOLUME\REVISED_SAR\MapTemplate\Resouce_11615V_201008_Figure_RegisteredTraplinesDirectlyAffectedByTheKeeyaskProject.mxd

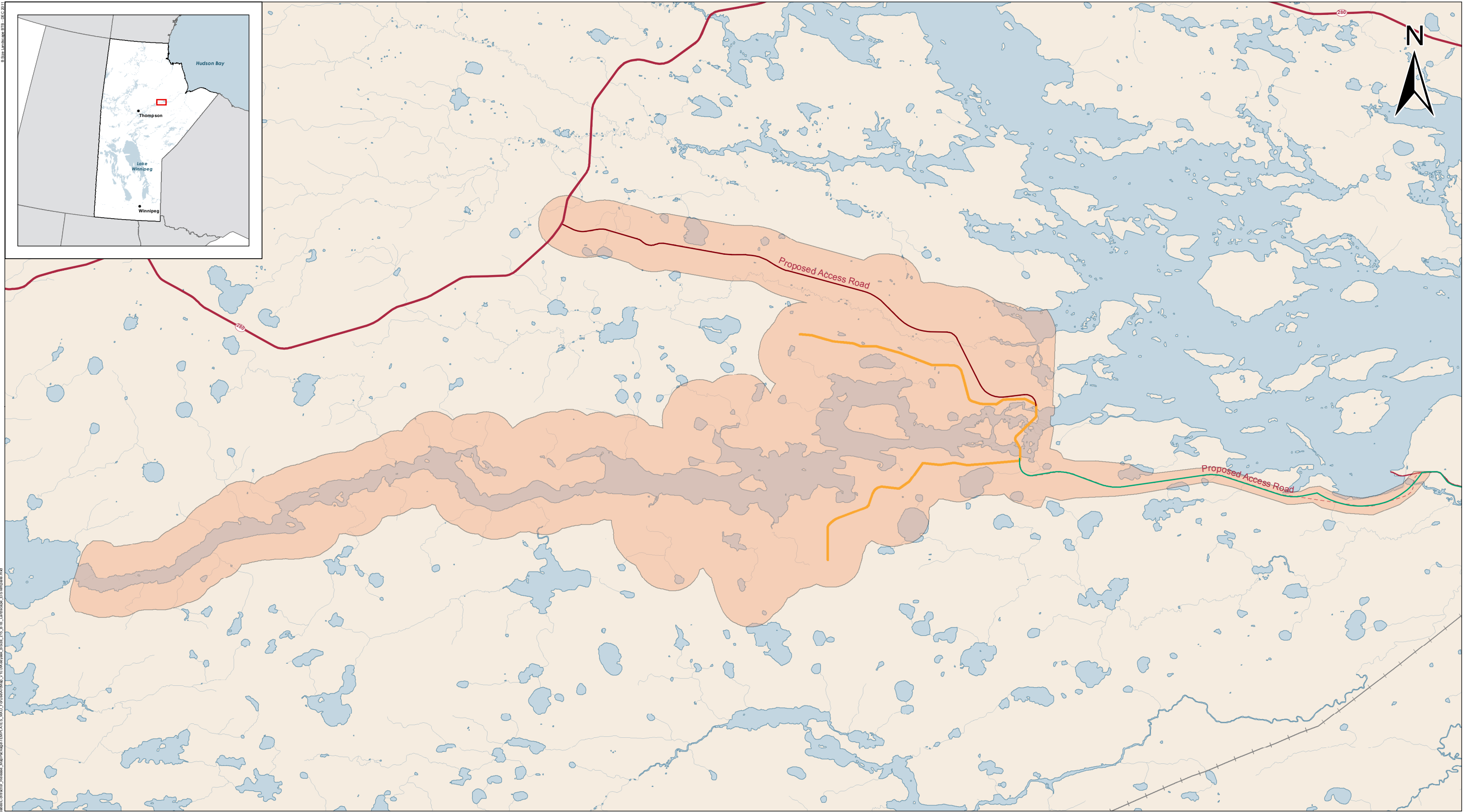


DATA SOURCE: Manitoba Hydro Historic Resources Branch, Culture, Heritage and Tourism		
CREATED BY: Northern Lights Heritage Services Inc.		
COORDINATE SYSTEM: UTM NAD 1983 Z15N	DATE CREATED: 24-MAY-12	REVISION DATE: 24-MAY-12
0 5 10 Kilometres 0 4 8 Miles	VERSION NO.: 1.0	QA/QC: VPP/MKW/ZZZ

Legend		
■ Archaeological Site (Core), 50		 First Nation Reserve
■ Archaeological Site (Local), 100		 Core Study Area
■ Archaeological Site (Regional), 162	 Core Study Area	 Regional Study Area
	 Local Study Area	
● First Nation Community		
● Town		

Note: the number of archaeological sites in each Study Area is cumulative and incorporates sub-regions.

Heritage Resources Study Areas with Registered Archaeological Sites



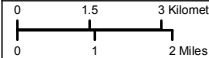
DATA SOURCE:
Manitoba Hydro
Historic Resources Branch, Culture, Heritage and Tourism

CREATED BY:
InterGroup Consultants Ltd

COORDINATE SYSTEM:
UTM NAD 1983 Z15N

DATE CREATED:
24-MAY-12

REVISION DATE:
29-OCT-13



VERSION NO:
1.0

QA/QC:
AF/LB/ZZZ

Legend



Core Study Area



Keeyask Principal Infrastructure Axis



North Access Road



South Access Road



Highway



Rail

**Heritage Resources
Core Study Area**