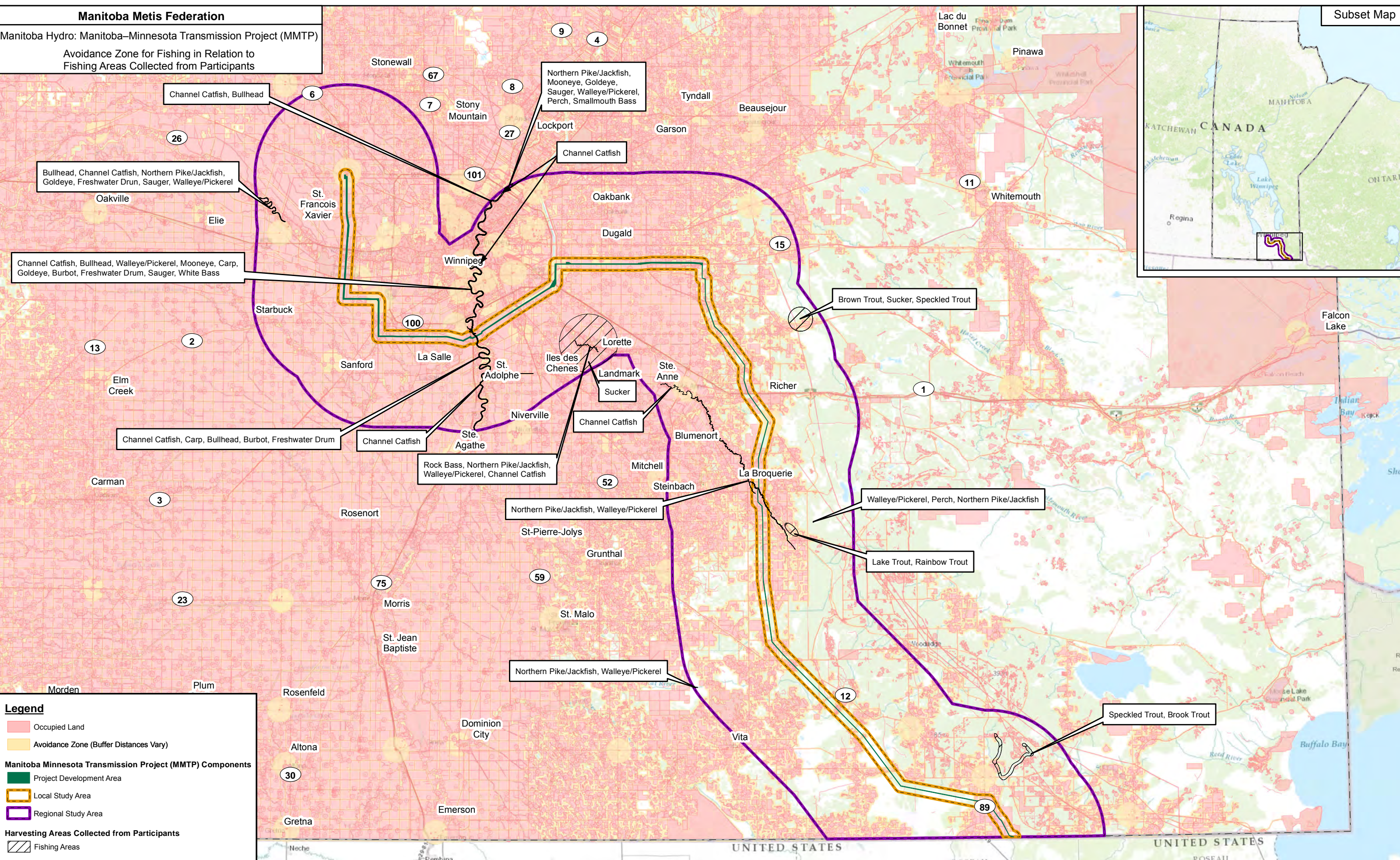
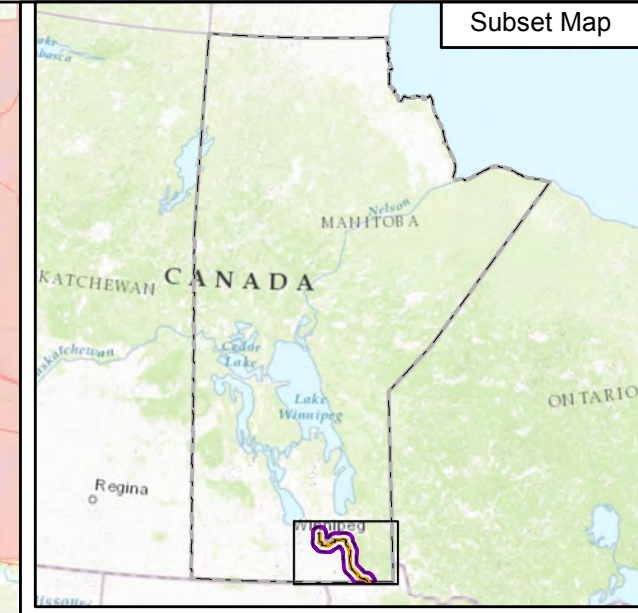


Manitoba Metis Federation

Manitoba Hydro: Manitoba–Minnesota Transmission Project (MMTP)

Avoidance Zone for Fishing in Relation to Fishing Areas Collected from Participants

Subset Map



Channel Catfish, Bullhead

Bullhead, Channel Catfish, Northern Pike/Jackfish, Goldeye, Freshwater Drun, Sauger, Walleye/Pickrel

Channel Catfish, Bullhead, Walleye/Pickrel, Mooneye, Carp, Goldeye, Burbot, Freshwater Drum, Sauger, White Bass

Channel Catfish, Carp, Bullhead, Burbot, Freshwater Drum

Channel Catfish

Rock Bass, Northern Pike/Jackfish, Walleye/Pickrel, Channel Catfish

Northern Pike/Jackfish, Walleye/Pickrel

Northern Pike/Jackfish, Walleye/Pickrel

Northern Pike/Jackfish, Mooneye, Goldeye, Sauger, Walleye/Pickrel, Perch, Smallmouth Bass

Channel Catfish

Sucker

Channel Catfish

Brown Trout, Sucker, Speckled Trout

Walleye/Pickrel, Perch, Northern Pike/Jackfish

Lake Trout, Rainbow Trout

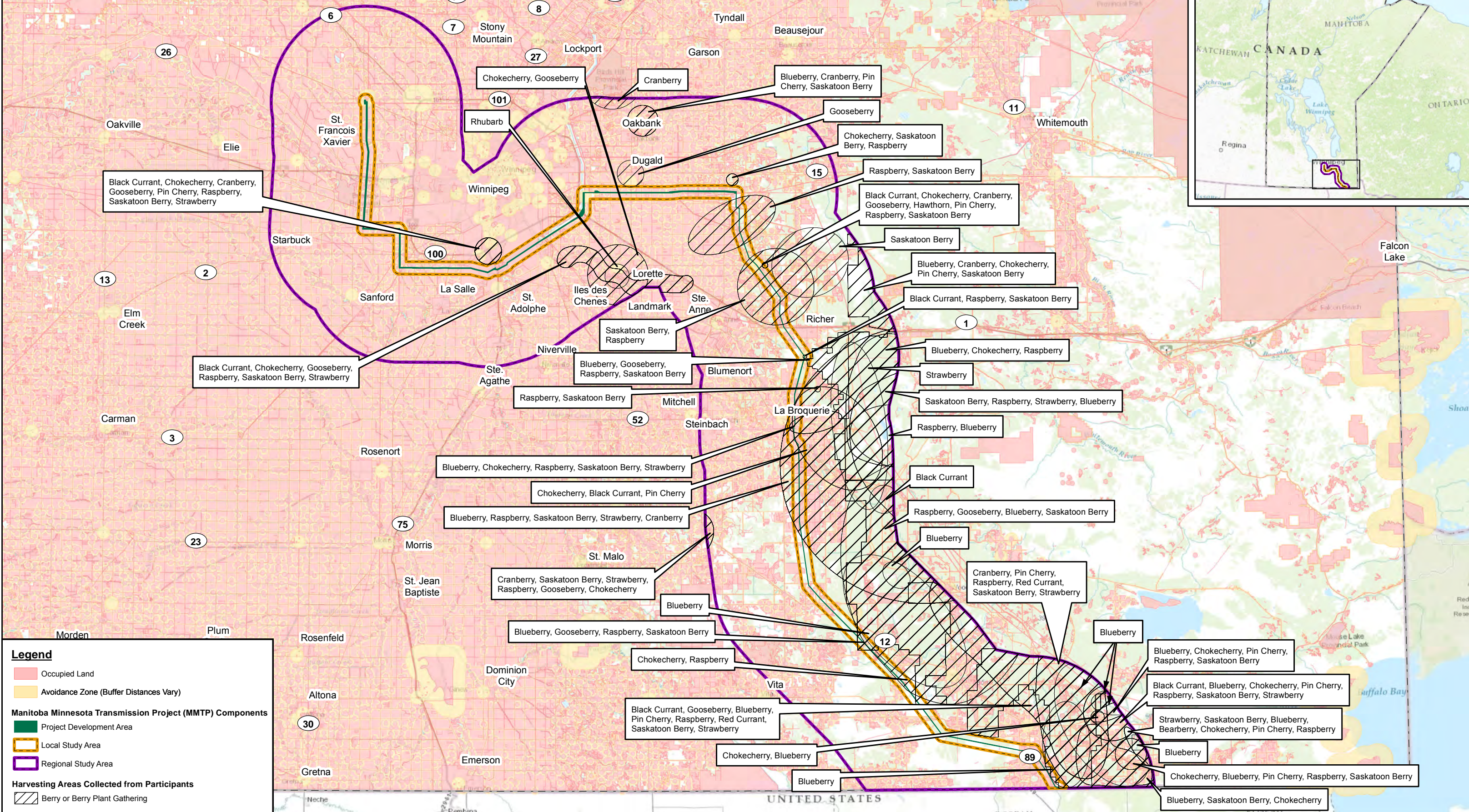
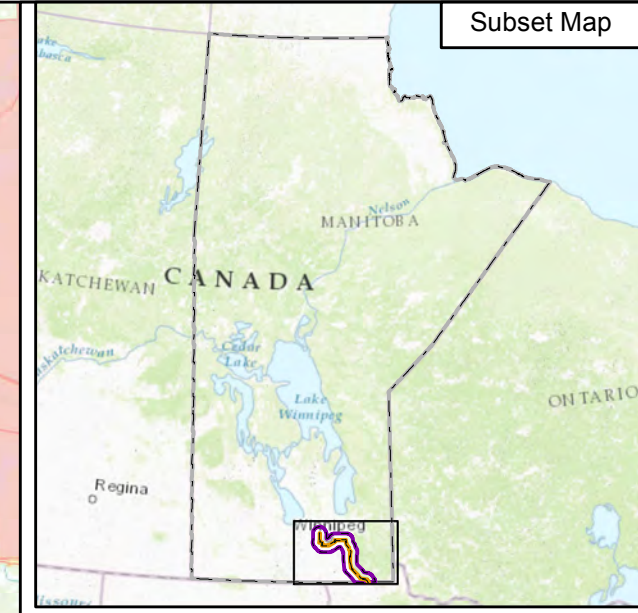
Speckled Trout, Brook Trout

Manitoba Metis Federation

Manitoba Hydro: Manitoba–Minnesota Transmission Project (MMTP)

Avoidance Zone for Berry or Berry Plant Gathering in Relation to Berry or Berry Plant Gathering Areas Collected from Participants

Subset Map



Legend

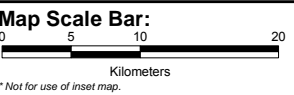
- Occupied Land
- Avoidance Zone (Buffer Distances Vary)

Manitoba Minnesota Transmission Project (MMTP) Components

- Project Development Area
- Local Study Area
- Regional Study Area

Harvesting Areas Collected from Participants

- Berry or Berry Plant Gathering



Map Scale: 1:1,600,000
Inset Map Scale: 1:17,000,000
Date: June 13, 2016

Custom Transverse Mercator Projection:
 False Easting: 5 Scale Factor: 0.996
 Central Meridian: -97 Linear Unit: Meter (1.0)

Data Sources: Manitoba Hydro, Government of Manitoba, GeoGratis (Natural Resources Canada)
Base Map Sources: Esri

THIS MAP SHOULD NOT BE CONSIDERED A SUBSTITUTE FOR CONSULTATION WITH MANITOBA MÉTIS FEDERATION. THIS MAP IS THE EXCLUSIVE PROPERTY OF THE MANITOBA MÉTIS FEDERATION. ANY REPRODUCTION OR DISTRIBUTION WITHOUT WRITTEN APPROVAL IS STRICTLY PROHIBITED. THIS MAP CONTAINS INFORMATION FROM THE MANITOBA LAND INITIATIVE - 2001 HER MAJESTY THE QUEEN IN RIGHT OF MANITOBA, AS REPRESENTED BY THE MINISTER OF CONSERVATION - ALL RIGHTS RESERVED. THIS MAP CONTAINS INFORMATION LICENSED UNDER THE OPEN GOVERNMENT LICENSE - CANADA. THIS MAP CONTAINS INFORMATION LICENSED UNDER THE OPEN GOVERNMENT LICENSE - ONTARIO.

Prepared By: Calliou Group

Prepared For: Manitoba Metis Federation

Map Produced By: Metis N4 Construction
 Cartographer: Leslie Sarapu

Figure: 5-2-5