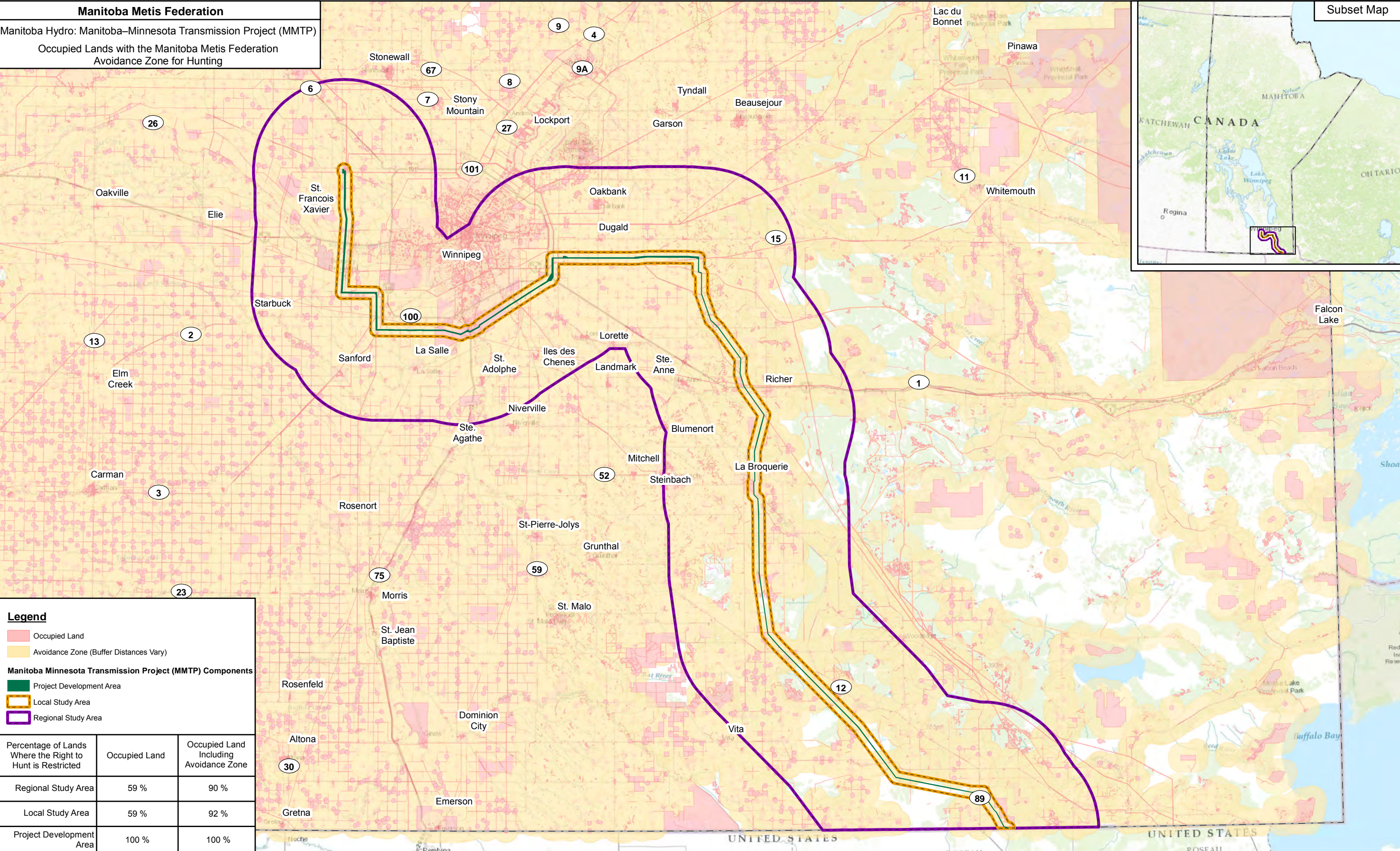
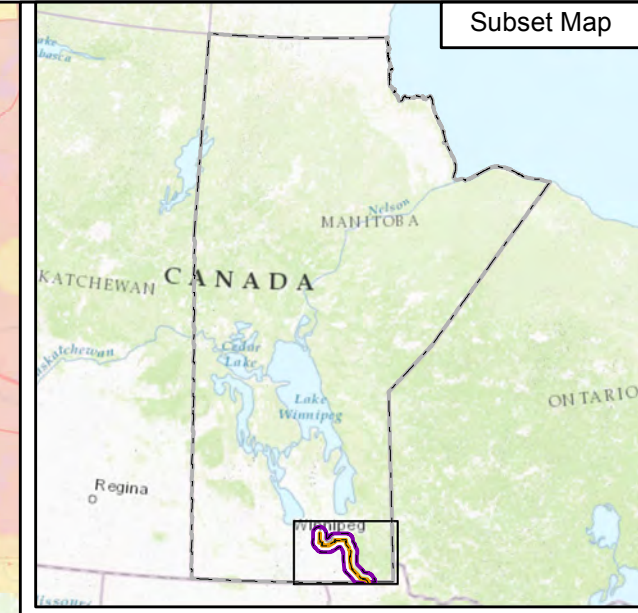


Manitoba Metis Federation

Manitoba Hydro: Manitoba–Minnesota Transmission Project (MMTP)

Occupied Lands with the Manitoba Metis Federation
Avoidance Zone for Hunting

Subset Map



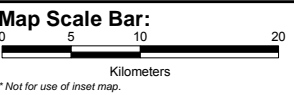
Legend

- Occupied Land
- Avoidance Zone (Buffer Distances Vary)

Manitoba Minnesota Transmission Project (MMTP) Components

- Project Development Area
- Local Study Area
- Regional Study Area

Percentage of Lands Where the Right to Hunt is Restricted	Occupied Land	Occupied Land Including Avoidance Zone
Regional Study Area	59 %	90 %
Local Study Area	59 %	92 %
Project Development Area	100 %	100 %



Map Scale: 1:1,600,000
Inset Map Scale: 1:17,000,000
Date: June 13, 2016

Custom Transverse Mercator Projection:
 False Easting: 5 Scale Factor: 0.996
 Central Meridian: -97 Linear Unit: Meter (1.0)

Data Sources: Manitoba Hydro, Government of Manitoba, GeoGratis (Natural Resources Canada)
Base Map Sources: Esri

THIS MAP SHOULD NOT BE CONSIDERED A SUBSTITUTE FOR CONSULTATION WITH MANITOBA MÉTIS FEDERATION. THIS MAP IS THE EXCLUSIVE PROPERTY OF THE MANITOBA MÉTIS FEDERATION. ANY REPRODUCTION OR DISTRIBUTION WITHOUT WRITTEN APPROVAL IS STRICTLY PROHIBITED. THIS MAP CONTAINS INFORMATION FROM THE MANITOBA LAND INITIATIVE - 2001 HER MAJESTY THE QUEEN IN RIGHT OF MANITOBA, AS REPRESENTED BY THE MINISTER OF CONSERVATION - ALL RIGHTS RESERVED. THIS MAP CONTAINS INFORMATION LICENSED UNDER THE OPEN GOVERNMENT LICENSE - CANADA. THIS MAP CONTAINS INFORMATION LICENSED UNDER THE OPEN GOVERNMENT LICENSE - ONTARIO.

Prepared By:
 Calliou Group

Prepared For:
 Manitoba Metis Federation

Map Produced By:
 Metis N4 Construction

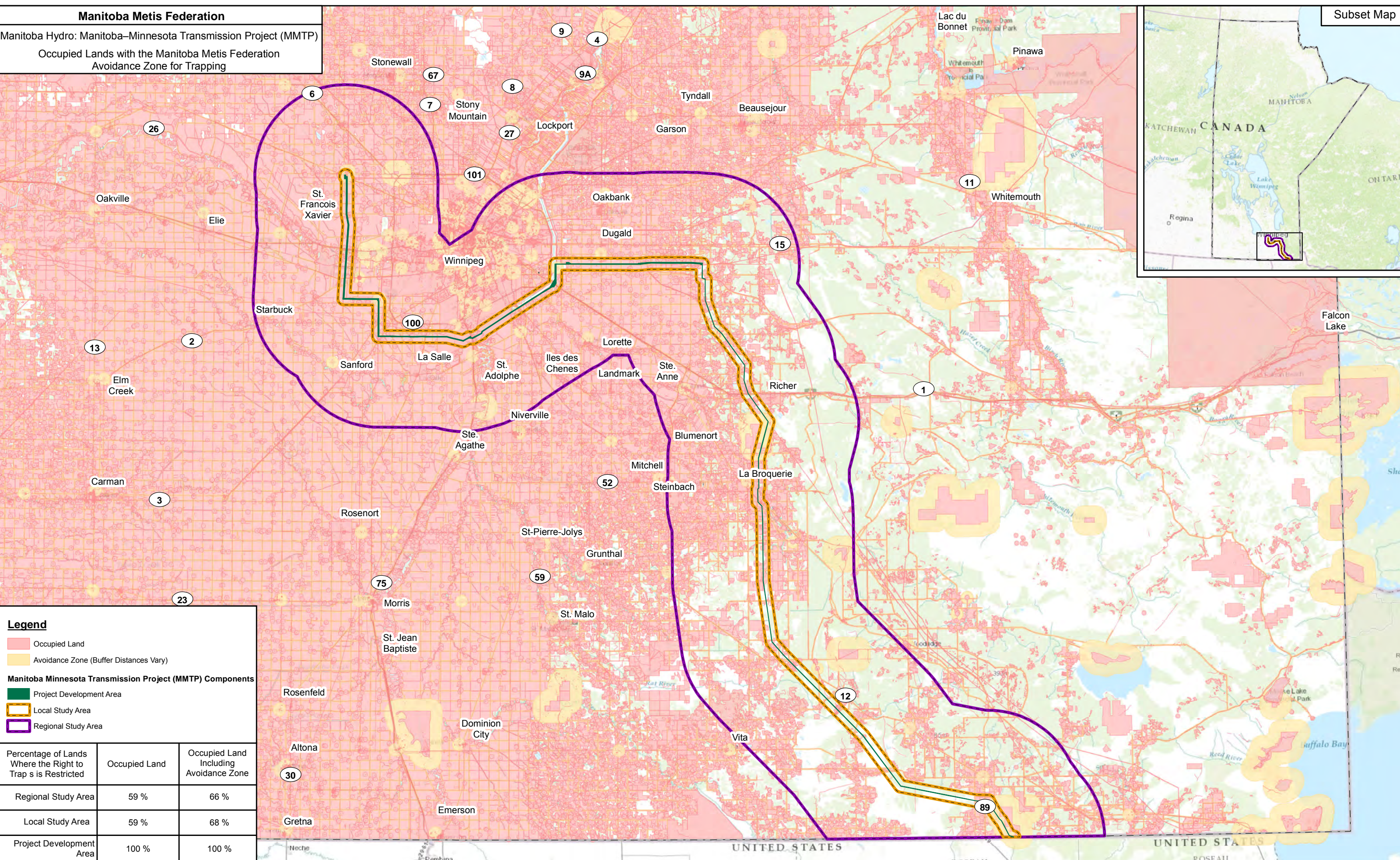
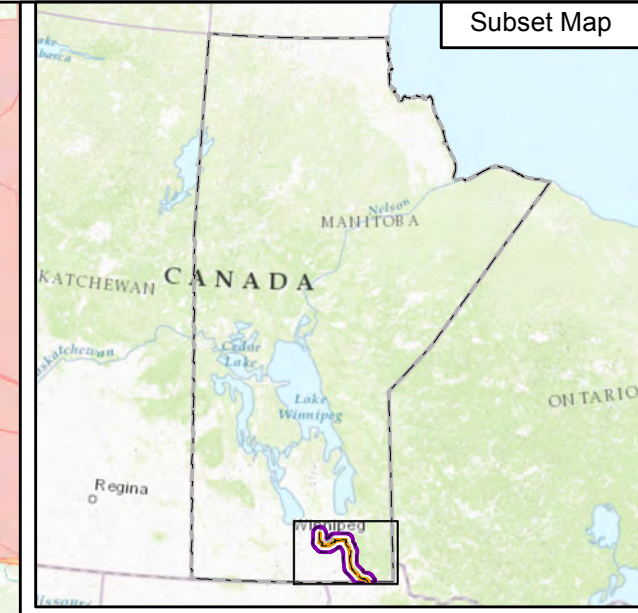
Figure:
 5-5-2-1

Manitoba Metis Federation

Manitoba Hydro: Manitoba–Minnesota Transmission Project (MMTP)

Occupied Lands with the Manitoba Metis Federation
Avoidance Zone for Trapping

Subset Map



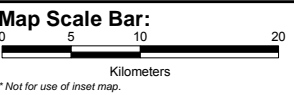
Legend

- Occupied Land
- Avoidance Zone (Buffer Distances Vary)

Manitoba Minnesota Transmission Project (MMTP) Components

- Project Development Area
- Local Study Area
- Regional Study Area

Percentage of Lands Where the Right to Trap is Restricted	Occupied Land	Occupied Land Including Avoidance Zone
Regional Study Area	59 %	66 %
Local Study Area	59 %	68 %
Project Development Area	100 %	100 %



Map Scale: 1:1,600,000
Inset Map Scale: 1:17,000,000
Date: June 13, 2016

Custom Transverse Mercator Projection:
 False Easting: 5 Scale Factor: 0.996
 Central Meridian: -97 Linear Unit: Meter (1.0)

Data Sources: Manitoba Hydro, Government of Manitoba, GeoGratis (Natural Resources Canada)
Base Map Sources: Esri

THIS MAP SHOULD NOT BE CONSIDERED A SUBSTITUTE FOR CONSULTATION WITH MANITOBA MÉTIS FEDERATION. THIS MAP IS THE EXCLUSIVE PROPERTY OF THE MANITOBA MÉTIS FEDERATION. ANY REPRODUCTION OR DISTRIBUTION WITHOUT WRITTEN APPROVAL IS STRICTLY PROHIBITED. THIS MAP CONTAINS INFORMATION FROM THE MANITOBA LAND INITIATIVE - 2001 HER MAJESTY THE QUEEN IN RIGHT OF MANITOBA, AS REPRESENTED BY THE MINISTER OF CONSERVATION - ALL RIGHTS RESERVED. THIS MAP CONTAINS INFORMATION LICENSED UNDER THE OPEN GOVERNMENT LICENSE - CANADA. THIS MAP CONTAINS INFORMATION LICENSED UNDER THE OPEN GOVERNMENT LICENSE - ONTARIO.

Prepared By: Calliou Group

Prepared For: Manitoba Metis Federation

Map Produced By: Metis N4 Construction

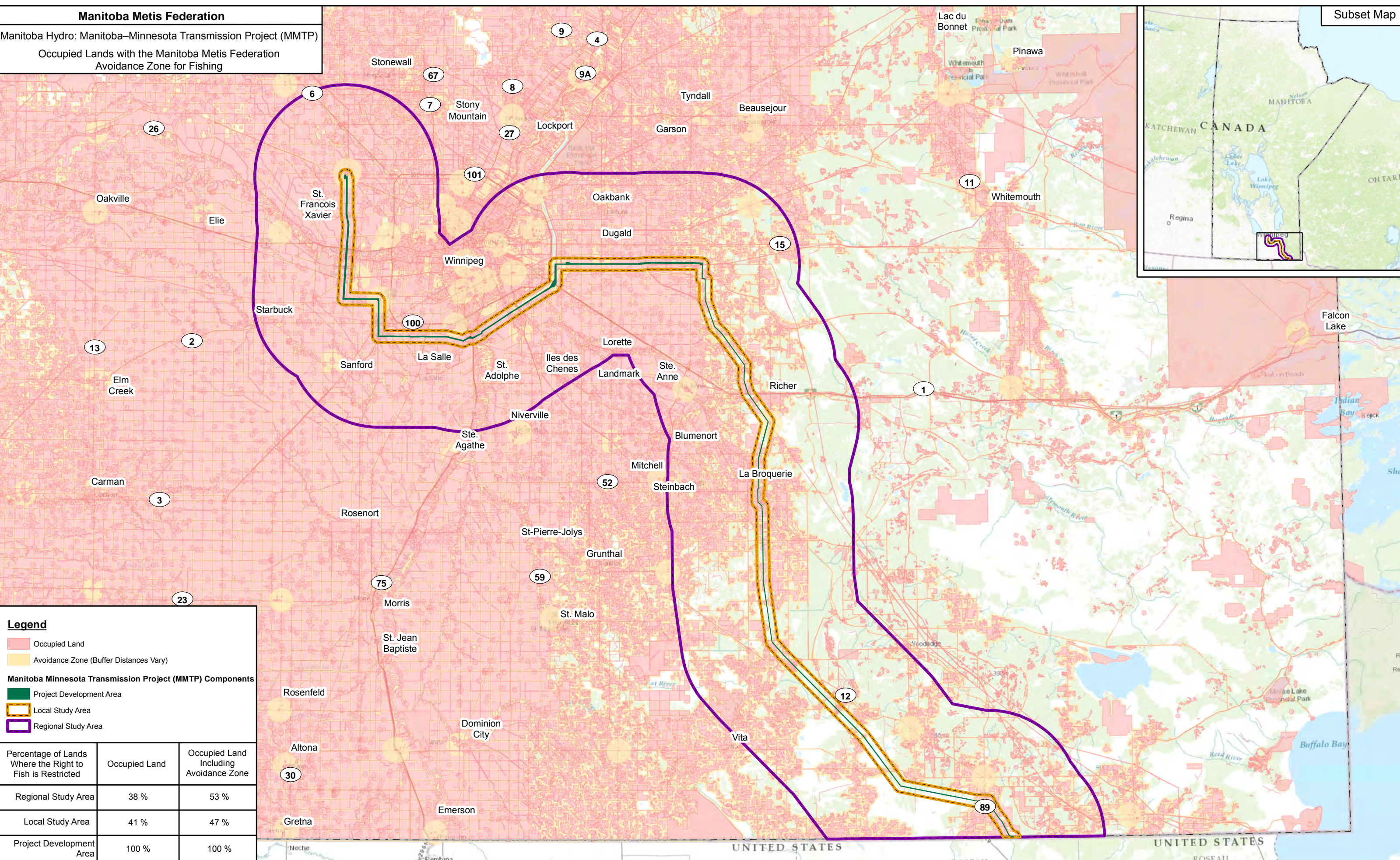
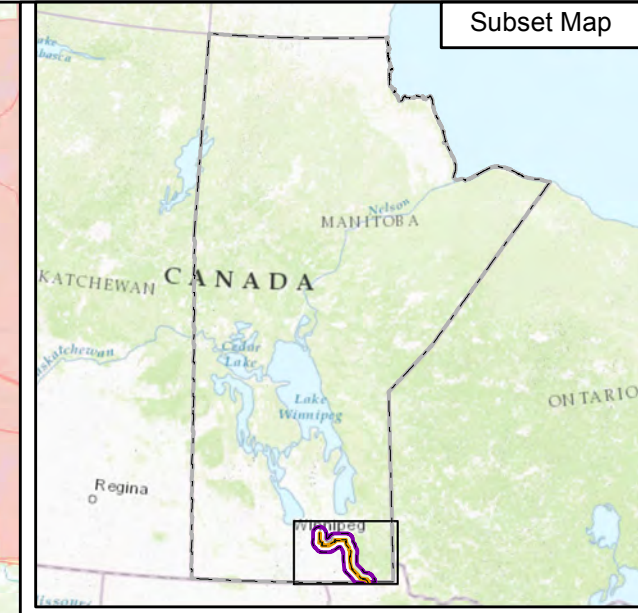
Figure: 5-5-2-2

Manitoba Metis Federation

Manitoba Hydro: Manitoba–Minnesota Transmission Project (MMTP)

Occupied Lands with the Manitoba Metis Federation
Avoidance Zone for Fishing

Subset Map



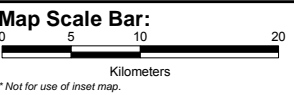
Legend

- Occupied Land
- Avoidance Zone (Buffer Distances Vary)

Manitoba Minnesota Transmission Project (MMTP) Components

- Project Development Area
- Local Study Area
- Regional Study Area

Percentage of Lands Where the Right to Fish is Restricted	Occupied Land	Occupied Land Including Avoidance Zone
Regional Study Area	38 %	53 %
Local Study Area	41 %	47 %
Project Development Area	100 %	100 %



Map Scale: 1:1,600,000
Inset Map Scale: 1:17,000,000
Date: June 13, 2016

Custom Transverse Mercator Projection:
 False Easting: 5 Scale Factor: 0.996
 Central Meridian: -97 Linear Unit: Meter (1.0)

Data Sources: Manitoba Hydro, Government of Manitoba, GeoGratis (Natural Resources Canada)
Base Map Sources: Esri

THIS MAP SHOULD NOT BE CONSIDERED A SUBSTITUTE FOR CONSULTATION WITH MANITOBA MÉTIS FEDERATION. THIS MAP IS THE EXCLUSIVE PROPERTY OF THE MANITOBA MÉTIS FEDERATION. ANY REPRODUCTION OR DISTRIBUTION WITHOUT WRITTEN APPROVAL IS STRICTLY PROHIBITED. THIS MAP CONTAINS INFORMATION FROM THE MANITOBA LAND INITIATIVE - 2001 HER MAJESTY THE QUEEN IN RIGHT OF MANITOBA, AS REPRESENTED BY THE MINISTER OF CONSERVATION - ALL RIGHTS RESERVED. THIS MAP CONTAINS INFORMATION LICENSED UNDER THE OPEN GOVERNMENT LICENSE - CANADA. THIS MAP CONTAINS INFORMATION LICENSED UNDER THE OPEN GOVERNMENT LICENSE - ONTARIO.

Prepared By:
 Calliou Group

Prepared For:
 Manitoba Metis Federation

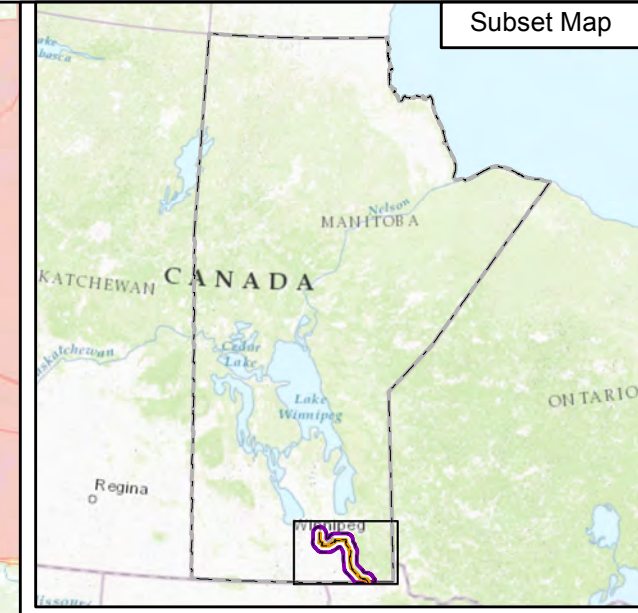
Map Produced By:
 Metis N4 Construction

Figure:
 5-5-2-3

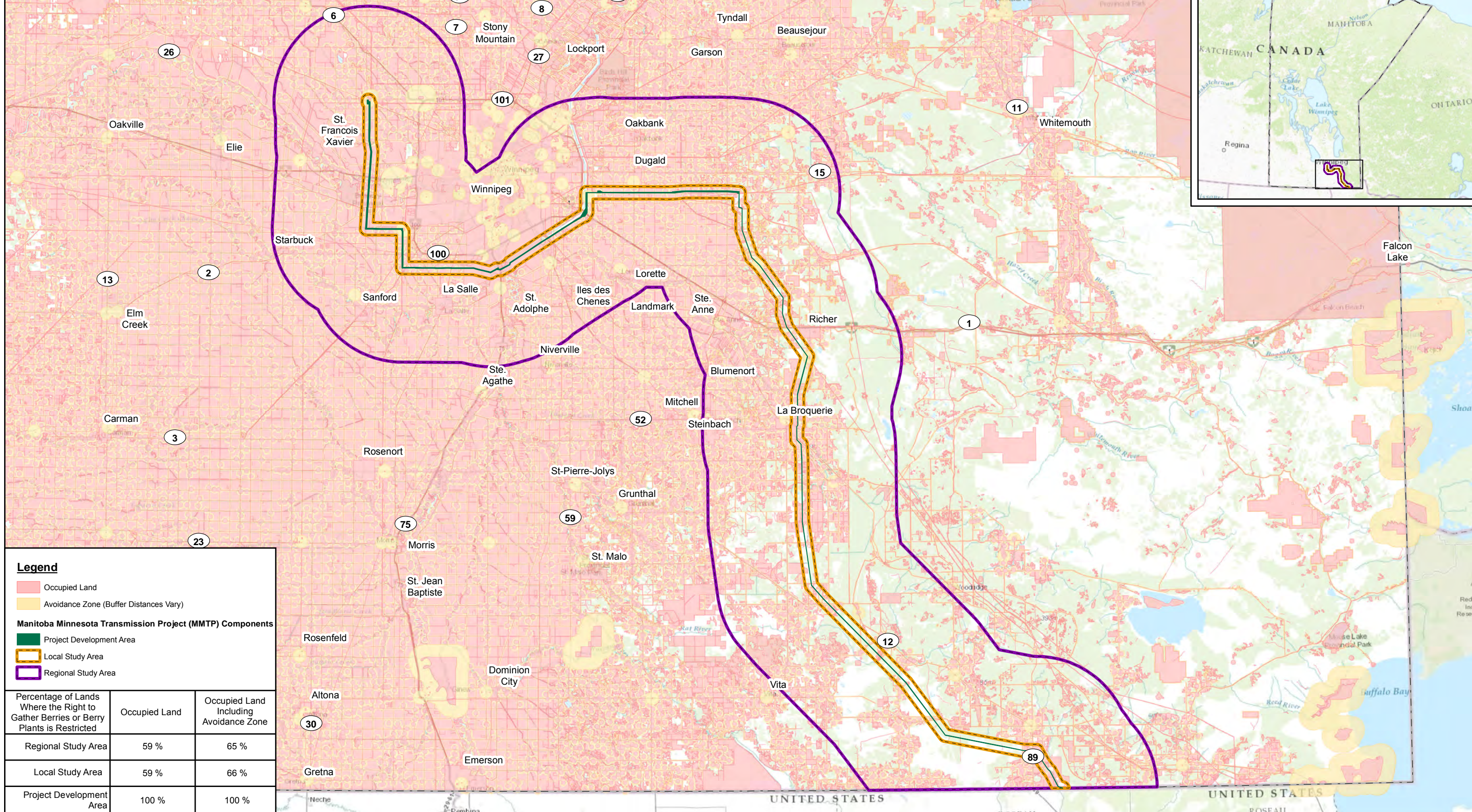
Manitoba Metis Federation

Manitoba Hydro: Manitoba–Minnesota Transmission Project (MMTP)

Occupied Lands with the Manitoba Metis Federation
Avoidance Zone for Gathering Berries or Berry Plants



Subset Map



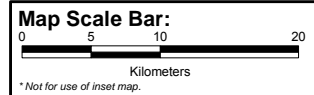
Legend

- Occupied Land
- Avoidance Zone (Buffer Distances Vary)

Manitoba Minnesota Transmission Project (MMTP) Components

- Project Development Area
- Local Study Area
- Regional Study Area

Percentage of Lands Where the Right to Gather Berries or Berry Plants is Restricted	Occupied Land	Occupied Land Including Avoidance Zone
Regional Study Area	59 %	65 %
Local Study Area	59 %	66 %
Project Development Area	100 %	100 %



Map Scale: 1:1,600,000
 Inset Map Scale: 1:17,000,000
 Date: June 13, 2016

Custom Transverse Mercator Projection:
 False Easting: 5 Scale Factor: 0.996
 Central Meridian: -97 Linear Unit: Meter (1.0)

Data Sources: Manitoba Hydro, Government of Manitoba, GeoGratis (Natural Resources Canada)
 Base Map Sources: Esri

THIS MAP SHOULD NOT BE CONSIDERED A SUBSTITUTE FOR CONSULTATION WITH MANITOBA MÉTIS FEDERATION. THIS MAP IS THE EXCLUSIVE PROPERTY OF THE MANITOBA MÉTIS FEDERATION. ANY REPRODUCTION OR DISTRIBUTION WITHOUT WRITTEN APPROVAL IS STRICTLY PROHIBITED. THIS MAP CONTAINS INFORMATION FROM THE MANITOBA LAND INITIATIVE - 2001 HER MAJESTY THE QUEEN IN RIGHT OF MANITOBA, AS REPRESENTED BY THE MINISTER OF CONSERVATION - ALL RIGHTS RESERVED. THIS MAP CONTAINS INFORMATION LICENSED UNDER THE OPEN GOVERNMENT LICENSE - CANADA. THIS MAP CONTAINS INFORMATION LICENSED UNDER THE OPEN GOVERNMENT LICENSE - ONTARIO.

Prepared By: Calliou Group

Prepared For: Manitoba Metis Federation

Map Produced By: Metis N4 Construction

Figure: 5-5-24